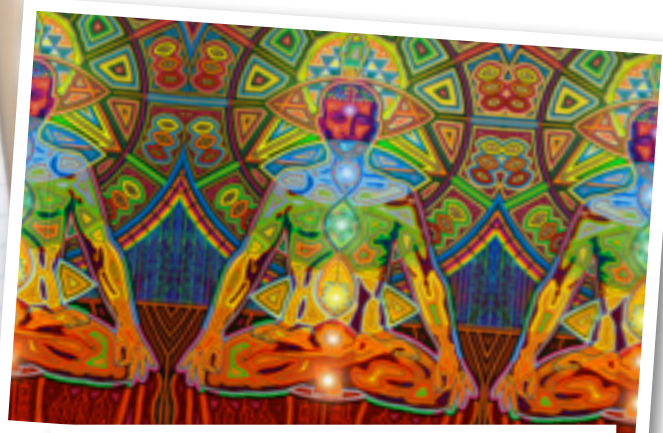


**KUNDALINI:
The Tree of
Knowledge
and the
Ancient
Serpent**



**SPIRITUAL
WARFARE**



The false holy spirit and counterfeit awakening.

THE FOLLOWING INFORMATION IS OBTAINED FROM VARIOUS SOURCES TO HELP BELIEVERS UNDERSTAND THE SOURCE AND BELIEF SYSTEM ON WHICH THE KUNDALINI SPIRIT IS BASED:

1 Corinthians 6:19-20 *“19 Do you not know that your **body is the temple (the very sanctuary) of the Holy Spirit** Who lives within you, Whom you have received [as a Gift] from God? You are not your own, 20 You were bought with a price [purchased with a preciousness and paid for, made His own]. So then, **honor God and bring glory to Him in your body.**”*

A temple is a sacred place. It is either a container of the Glory of the Lord, or it is a container of darkness and the counterfeit glory and false holy spirit.

We are designed to **be forerunners** and the goal and vision of the enemy is to disable our faith, our spiritual walk, our physical bodies and our finances to make us limp, lame, emotionally, physically, spiritually and financially so we become “spineless” against demonic forces, principalities and powers and against the agents and powers of darkness – witchcraft. So there is a master plan from Lucifer to take over our bodies, our minds, wills and emotions to turn us into temples of darkness.

We need to become temples of Light – carrying the Glory of the Lord. The desire of the Lord is that we should run the race and finish it to win the prize (**Phil. 3:14**).

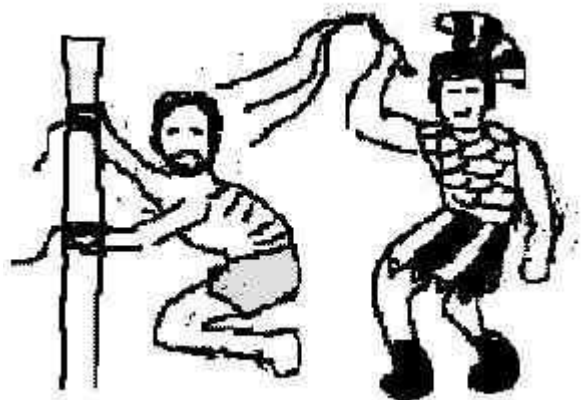
The master plan of satan is to take our backbone and as the spine is the main “highway” of the **central nervous system** – attached to every organ and function of our bodies – if he can take our spines into darkness, the whole body will be affected – even the smallest cells.

So too is the Lord’s true plan – to claim our backbones and see the Light of the Glory of the Lord fill His temple. When the Light fills our spines it will also fill the temples of our brain. So our body and minds are flooded with the Light of God and the darkness will have to flee.

Isaiah 50:6 *“6 I gave My **back** to the smiters and My cheeks to those who plucked off the hair; I hid not My face from shame and spitting.”*

Jesus gave His back to those who whipped him. He received thirty-nine stripes – one for every major illness.

He was braised for our iniquities, and by His stripes we are healed!



Kundalini forms the backbone of all Eastern religions. It is called the tree of life – this is the false tree. The true Tree of Life is Rev. 22.

Revelation 22:2 “2 Through the middle of the broadway of the city; also, on either side of the river was the tree of life with its twelve varieties of fruit, yielding each month its fresh crop; and the leaves of the **tree were for the healing and the restoration of the nations.**”

This tree brings healing to the nations.

The Eastern Tree

The tree of Eastern religions is the tree that **kundalini** resides just as the serpent in the tree of the knowledge of good and evil in the Garden of Eden. The roots of this Eastern tree are underground. These roots hide this Kundalini spirit very well so that it can be released in the iniquities of our family lines.

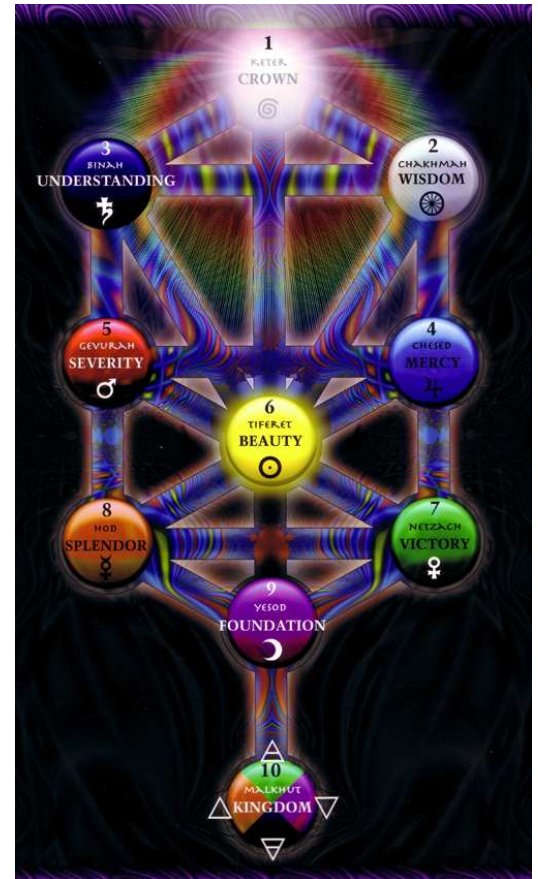
Iniquity means:

- unrighteousness,
- wickedness
- gross injustice.

It produces a **twisted nature – a perverse, lawless attitude, a weakness and a fault in our personality.**

Jam. 4:1 “1 **WHAT LEADS** to strife (discord and feuds) and how do conflicts (quarrels and fightings) originate among you? Do they not arise from your sensual desires that are ever **warring in your bodily members?**”

Eph. 2:3 “3 Among these we as well as you once lived and conducted ourselves in the passions of our flesh [our behavior governed by our corrupt and sensual nature], obeying the impulses of the flesh and the thoughts of the mind [our cravings dictated by our senses and our dark imaginings]. **We were then by nature children of [God’s] wrath** and heirs of [His] indignation, like the rest of mankind.”



Separating the Precious from the Vile

We must be determined to **separate the vile from the precious**: the Kingdom of Light from the kingdom of darkness. This is the true mandate for the Priesthood of Yeshua.

Jeremiah 15:19-21 *“19 Therefore thus says the Lord [to Jeremiah]: If you return [and give up this mistaken tone of distrust and despair], then I will give you again a settled place of quiet and safety, and you will be My minister; and **if you separate the precious from the vile** [cleansing your own heart from unworthy and unwarranted suspicions concerning God’s faithfulness], you shall be My mouthpiece. [But do not yield to them.] Let them return to you—not you to [the people].
20 And I will make you to this people a fortified, bronze wall; they will fight against you, but they will not prevail over you, for I am with you to save and deliver you, says the Lord.
21 And **I will deliver you out of the hands of the wicked**, and I will redeem you out of the palms of the terrible and ruthless tyrants.”*



The kundalini is vile – it produces death and it will kill the body.

(Please note: you do not have to be a yoga practitioner to be bound by Kundalini).

Kundalini means "divine power". The **backbone or spine** is the **vehicle** for this demonic “divine” power.

It is the vehicle for false power, false passion, false ecstasy, false signs and wonders, false fire, the vehicle of magic power called “the force” by occultists.

Kundalini is the power of the “**great mother**” – not the father, the power of the **mother**

goddess who releases energy like an atomic bomb which **activates the rebirth cycle** that transforms people into **the sun god or goddess fuelled by “mother power”**.

Kundalini is at the core of New Age. She is the “great mother and the great lover” and behind her disguise lies kundalini Kali, the goddess of Black Death, murder, rage, vengeance and war that causes chronic illness and ultimately death by magic.



This is the power behind New Age “to take over the body as a temple for Lucifer” and fill us with **false dunamis power** to produce **false prophets, prophetesses and priesthoods** that use the **eyes of divination – the third eye of witchcraft** and the occult instead of the eyes of the spirit.

We need to discern the difference for the kundalini is the opposite of Jesus – it is the:

- false holy spirit
- false tongues
- false fire
- false shekinah glory
- false grace
- false humility
- false dunamis or the dynamite power of Acts
- false signs and wonders.



The kundalini serpent births people into:

- clairvoyancy
- psychic realms and powers
- false visualization
- magic and the worship of the zodiac, the sun, moon and stars
- death, destruction and chronic pain and illness.

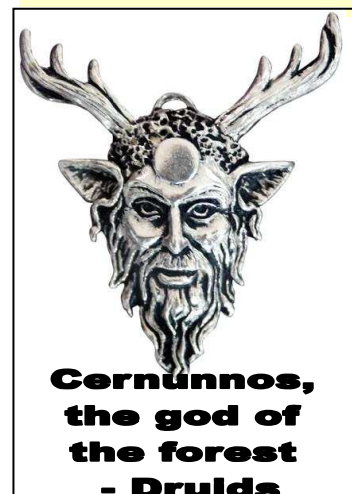
It is the opening of the third eye and the false prophetic which has become the norm on a world-wide level.

Kundalini declares that:

- It creates the universe.
- SELF is the creator.
- it is the face of god, the face to adore, absolute wisdom - the false face of Jesus.
- the lotus flower is the power and energy of the sun.
- the **lotus position** releases kundalini in a person. (It is the chosen position of most false gods shown in their images – Buddha, **Cernunnos**, etc.)

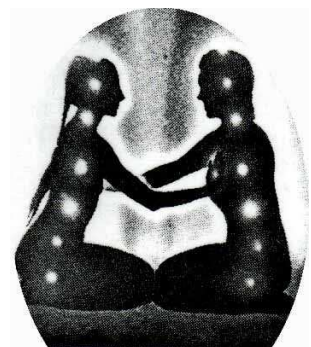


Family involvement plus any one of the following awakening mechanisms is enough to awaken the serpent and false power.

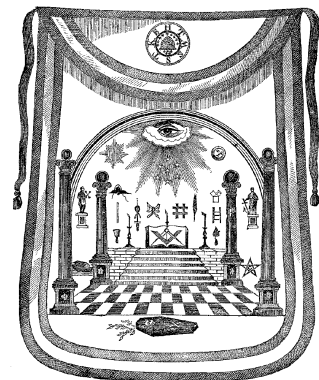
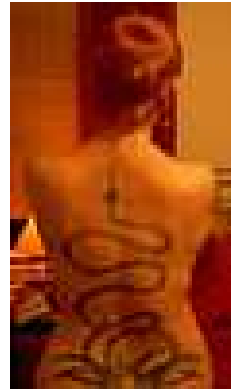


The Kundalini spirit or fire can be activated through the following things:

- Automatically (if the person is born into trans-generational **Satanism** or trans-generational **fertility cults**.)
- Familiar spirits.
- **Unrepented generational sins** – there are people who are sincerely seeking the grace of God (When occultic callings have not been renounced and bloodlines dealt with, then people can go into a place in the spirit where they are seeking God but haven't understood that there can be other spirits that they can get in contact with – they then can be activating the kundalini power.)
- **Devotional practices**, e.g. meditation, chanting.
- **Trauma, shock, a hard knock** – When a person goes very fearful traumatic experiences then adrenaline is released and one is unguarded at that moment – **all gates (senses) are opened** which makes one **very vulnerable** for an evil spirit to enter you.
- Occult accidents.
- Massage (Reiki, Hot Stone massage / occultic alternative healing methods where they are working on the spine – even the hands and the feet.)
- Yoga.
- Sex outside of marriage or ungodly sex in marriage: sexual penetration or stimulation by any means – includes tantric sex. (When occultic callings have not been renounced and bloodlines dealt with.)
- Awakened breathing.
- Childbirth (When occultic callings have not been renounced and bloodlines dealt with)
- Occult surgery.
- Fun fair rides e.g. “big dippers” / Cobra at Ratanga Junction – it is structurally built to represent the DNA spirals / Caduceus.



- Through all the senses – sight, sound, taste, touch, smell. (all the gates, e.g. Hitler listened to Wagner music / smell: perfumes / anything that touches the senses – makes you feel passionate – anything that stimulates)
- Witchcraft initiations, books, movies.
- Trance dancing / Rave parties.
- Dread locks
- Impartation of kundalini guru.
- Tattoos
- Tying of the knot of the Freemason’s apron.
- Satanic dedications.
- the awakening can occur in a Christian without dabbling at all in New Age, Hinduism and false religions.
- Incest, rape and sodomy¹.
- Occult dedication.



Exodus 7:9-12 “When Pharaoh says to you, “Prove your authority by a miracle,” then tell Aaron. “Throw down your rod before Pharaoh, that it may become a serpent”.

So Moses and Aaron went to Pharaoh and did as the Lord had commanded; Aaron threw down His rod before Pharaoh and his servants and it became a serpent.

Then Pharaoh called for the wise man, skilled in magic and divination and the sorcerers, wizards, jugglers. And they also, these magicians of Egypt did similar things with their enchantments and secret arts.

For they cast down every man his rod and they became serpents; **but Aaron’s rod swallowed up their rods.**”

The power of Yahweh was greater than all the serpents and magic of Egypt.

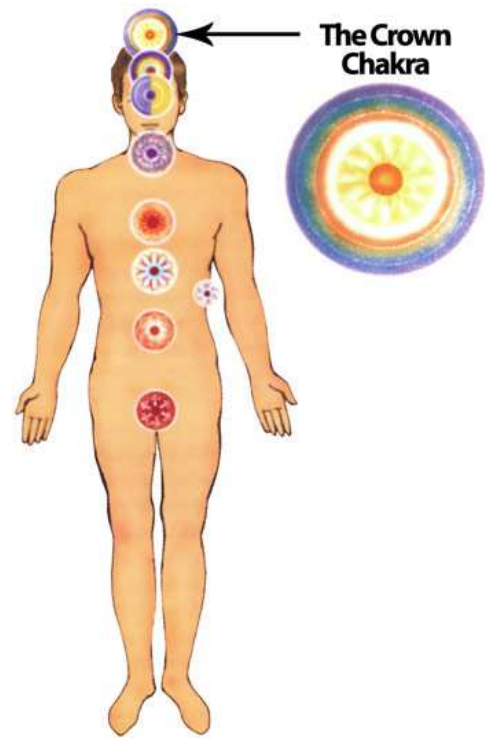
Ecclesiastes 12:6 “Remember your creator earnestly now, before the **silver cord** of life is snapped apart, or the **golden bowl** is broken, or the **pitcher** is broken at the **fountain** or the **wheel** broken at the cistern and the **whole circulatory system** of the **blood** ceases to function.”

¹ See “The Defiled Bride – Sodomy and Sexual Abuse” available from Kanaan Ministries.

This is a description of:

- the **silver cord** of the spine .
- the **golden bowl**,
- the **pitcher at the fountain**, (the so called crown charka)
- The **wheel**
- the **charkas**,
- and the whole human **circulatory system**

that is used in the yogic process, but they were created by **The Creator, Yahweh**.



Revelations 13: 2-5, 12-13.

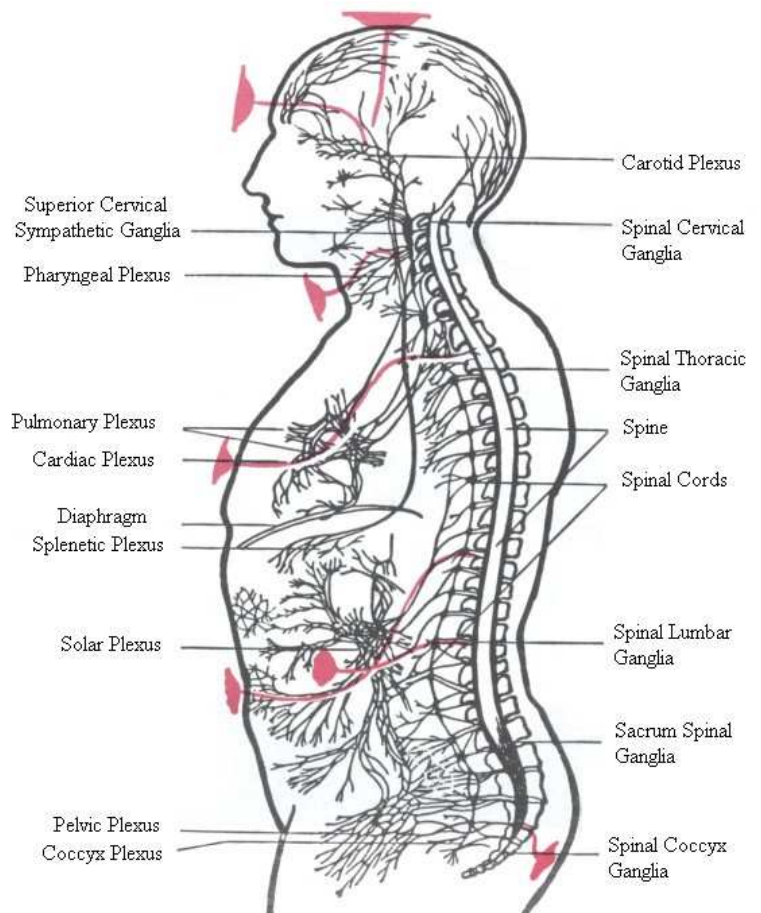
”And the beast which I saw was like unto a leopard, and his feet were of a bear, and his mouth as the mouth of a lion: and the dragon gave him his power, and his throne, and great authority. And I saw one of his heads as though it had been smitten unto death; and his death stroke, a fatal wound was healed: and the whole earth followed after the beast in amazement; and they worshipped the dragon because he gave his authority unto the beast; and they worshipped the beast saying ” who is like the beast? Who can fight against it?” It was given a mouth speaking arrogant blasphemies; and it was given authority to act for 42 months...

Then I saw another beast coming up out of the earth. It had two horns like those of a lamb but it spoke like a dragon.

*It exercises all the authority of the first beast in its presence; and makes the earth and all its inhabitants worship the first beast, the one whose wound had been healed. **It performs great miracles even causing fire to come down from heaven.***

It deceives the people living on earth by the miracles it is allowed to perform in the presence of the beast and tells them to make an image honouring the beast that was struck by the sword but came alive again.

*It was allowed to put breath into the image of the beast so that the image of the beast could even speak; and **it was allowed to cause anyone who did not worship the image of the beast to be put to death.***



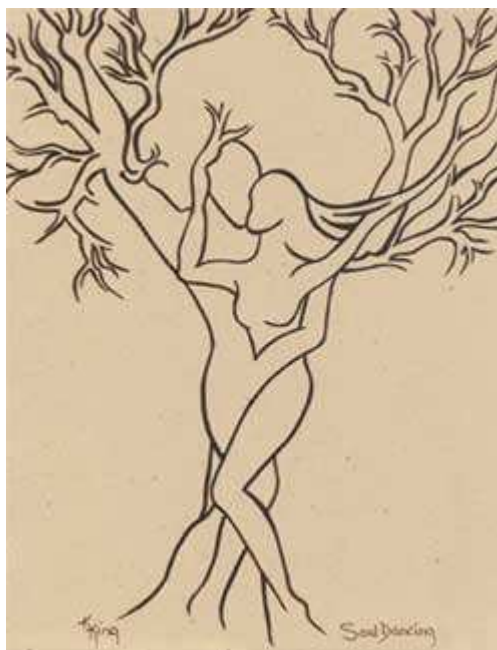
KUNDALINI YOGA

This is a quote from: '*The Book of Symbols*'...

"Humanity has been bound to see itself as a **symbol** - in many traditions, including even the most primitive.

Man is described as a **small scale copy** of the universe, a **microcosm** or synthesis of the world. **Man is the centre of the world symbols.**

From wise men of the Upanishads², to Christian theologians and those who seek out the secrets of alchemy, men have drawn analogies and seen correspondences between the **elements** which make up the human frame and those which make up the universe and between **principals** which control human emotions and those which govern the universe.



Some saw:

- the **bones** of man as linked to the **earth**,
- his **blood** to **water**,
- his **lungs** to **air**,
- his **head** to **fire**,
- the respiratory system to air,
- the **circulatory** system to **water** and
- the digestive system to earth.

Man is in touch with the **three levels**,

- his **feet** with the terrestrial,
- his **chest** with the atmospheric,
- his **head** with the celestial.

In the Athrarva –Veda, man was originally regarded as the **cosmic pillar**, a sort of **Atlas**, with the duty of holding earth and heaven together.



² The **Upanishads** are regarded as part of the **Vedas** and as such form part of the **Hindu scriptures**. They primarily discuss **philosophy, meditation**, and the nature of **God**; they form the core spiritual thought of **Vedantic Hinduism**. Considered as **mystic** or **spiritual** contemplations of the **Vedas**, their putative end and essence, the Upanishads are known as **Vedānta** ("the end/culmination of the Vedas").

Genesis. 1 : 26; 2: 7.

“and God said let Us make man in Our image after Our likeness..... and the Lord God formed man out of the dust of the ground and breathed into his nostrils the breath of life; and man became a living soul.”

Pagans have corrupted this principle set out in Genesis namely of welding the relationship between the **microcosm** (man), the macrocosm (the universe) and the power of God to become the **cornerstone** of all idolatry / astrological teachings.

The **god-universe-man** was expressed as a **sphere**, the traditional image of the world. (The wheels of the chakras echo these spheres or circles.)

Chinese physicians evolved the interrelatedness between the cosmos and the human body in the Ying/Yang (black / white):

- The round head: the sky.
- The hair: the stars and constellations.
- The eyes and ears: the sun and moon.
- The breath: wind.
- The blood: rain.
- The bodily vessels and humours: streams and waters.
- The apertures and veins: valleys and rivers.



The four bodily seas are:

- Stomach – the sea of water.
- Aorta: the sea of blood.
- Mediastinum of the lungs;
- Brain and bone marrow.

The **body**: the element earth.

The **skeleton**: mountains.

The **heart**: the Great Bear. (Connects to the goddess and to the constellation Ursa Major)

The **seven apertures** in the heart: the 7 stars in the Great Bear. (Connects to the 7 charkas of Yoga.)

The 5 internal organs: the 5 elements.

The 8 parts of the body: the 8 trigrams.

The 9 apertures in the body: the 9 gates of heaven.

The four limbs: the four seasons.

The 12 principal joints: the 12 months.



The 360 minor joints: the 360 days of the year (Chinese).

Pagan man has always understood that he was made in the image of the 'world' and by a 'creator'.

This principal is the same in all forms of Yoga.

YOGA

The term '**Yoga**' means: '**unification**' or '**union with the divine spirit.**'

The English word yoke is the root which means:

- '*joining*' or '*junction*,
- *a frame or crossbar fitting over the necks of two oxen and attaching them for ploughing.*

This bar was fastened to the foreheads of the cattle at the root of the horns or projected down on the shoulders of them held in position by thongs and bonds and fastened under their throats.



It is a symbol of **enslavement**. The Athenian law-giver Buzyges invented the yoke which allowed cattle to be controlled and harnessed.

The **Roman** custom of making the vanquished 'pass under the yoke' is self explanatory. In the *Caudine Forks* a Roman army defeated by the Samites were forced to crawl under a spear stuck into the ground called the *jugum ignominiosum*, **the yoke of shame**.

In Rome there was the '*sisterly beam*' under which all murderers has to pass before their crimes were expiated. This formed the ancient purificatory custom and was essential if the person was to regain his place in society again – *you had to pass under the yoke.*

It symbolized a survival of the **secret or artificial gateways** through which an initiate had to pass from the supernatural world in which he had undergone his ordeal back into the everyday world and re-integration into society. This forms the same principle as yoga chakras - gates.

In **Matthew 11:29,30** True Jesus says:

"Take My yoke upon you, and learn from Me; for I am meek and lowly: and you will find rest for your souls, for it is easy. For My yoke is easy and My burden is light."

The **yoke of Yoga** is very **heavy** for it requires:

- ritual,
- self denial,
- pain and
- a never ending cycle of paying obeisance to deities
- The never ending burden of the worry of the process of reincarnation.

There are many different types and techniques of **Yoga** –

- *Raj or Raja Yoga,*
- *Hatha Yoga,*
- *Tantra,*
- *Karma Yoga,*
- *Jnana Yoga,*
- *Intergral Yoga,*
- *Patanjali Yoga,*
- *Bhakti Yoga ,*
- *Shiva Yoga as well as*
- *Kundalini Yoga.*



Hatha means **HA-** the sun, **THA** – the moon.

The **union** of these **two energies** is called **Yoga**. These are not merely physical exercises as is commonly believed, but are aimed at **unifying human nature with the divine**, to **the false tree of life** within all humans. It is the internal union of kundalini and the eternal union of man – sun, woman – moon in tantric yoga sexual union.

The Kundalini is released to nourish the false tree of life within us. The spine – the pathway of kundalini is even referred to as 'the tree of life' that triggers spiritual rebirth and evolution in Hinduism.

Kundalini is called *serpent power*, 'the mother of Yoga' and 'bestower of Yoga'³.

HUMAN ANATOMY

In the **human anatomy** there are other areas also called **the tree of life** – the **ARBOR VITAE**. One is in the **cerebellum** of the brain the other in the **female cervix**.



³ See Prayer of Renunciation on Yoga available from Kanaan Ministries.

The Latin word **Arbor** means:

- a tree,
- a main shaft or axle,
- a cutting or milling tool,
- something that rotates in a machine. (this connects to the yogic understanding of the rotating charkas, energy centers in the spine)
- a shady retreat,
- a place of shelter,
- a harbour or refuge,
- a mast of the trunk or a mast of a tree,
- a ship,

but also

- a gallows, gibbet – a place to be hanged.
- a grove – a place of pagan worship.



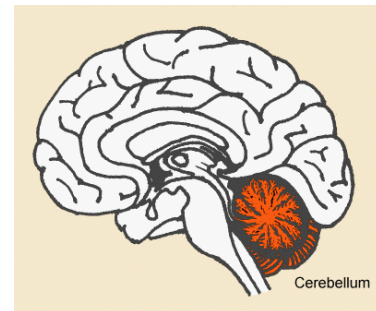
The Latin word **Vitae** means:

- life,
- life as a period of time,
- the course of life a form of existence but also
- a *ghostly being*.

This is the root of the word **vitality**.

The **Arbor Vitae** in the **brain** is a tree-like section of the **cerebellum**. The other is within the cervix of the **uterus** – the **Plica Palmatae**.

It is significant that in the Latin definitions of the words **Arbor Vitae**, there is the **potential capacity for both death and life**.



The **Arbor** can be:

- a place of life or death – hanging, or a place of life,
- the place of a ghostly being (demon.) or of the true Holy Spirit.

So the Arbor also has the potential for being used for **good** and for **evil, life or death**, a place of shelter. God describes Himself as a Refuge from the storm.

The Garden was a place of intimacy, safety with God. **The Druids** who **worshipped Diana**, corrupted this concept and used **a grove of trees** as a place of bloody sacrifice to the goddess. The **worship of the oak** is an external manifestation of the **Hindu roots of Druidism**.



Genesis 2:16 "The Lord "commanded, gave the person (Adam) this order: You may freely eat from every tree in the garden

17 “except the tree of the knowledge of good and evil. You are not to eat from it, because on that day that you eat from it, it will become certain that you will die.” This was the very first commandment given to man from God.

Genesis 3: 1 “Now the serpent was more crafty than any wild animal which Adonai, God had made. He said to the woman “did God really say. You may not eat from any tree in the garden?”

5 Because God knows that on the day that you eat from it, your eyes will be opened and you will be like God knowing good and evil.

6 When the woman saw that the tree was for good for food and it had a pleasing appearance and that the tree was desirable for making one wise she took of its fruit and ate. She also gave some to her husband who was with her and he ate.

7 Then the eyes of both of them were opened...

(Something happened to their capacity to see. They saw something that they had never seen before.)

13 The woman answered “the serpent tricked me, so I ate.”

For centuries, in our rebellion and ignorance, we have continued to be tricked by the serpent, we have been tapping into the wrong **power of the serpent** trying to find answers, through the soul power of Yoga and the occult instead of being guided by the Holy Spirit.

Occult power blinds and causes us to be in darkness..

The very word **Occult** means ‘**hidden**’; so it is quite literally ‘out of sight.’ When Adam and Eve’s eyes were opened was it the ability to see the occult, the hidden things of Satan’s kingdom, that God had protected them from before?

Genesis. 1:27 “God says “so God created man in His own image; in the image of God He created him: male and female He created them.”

Often we only perceive this as an external form, but the interior parts of God’s Image, our **human anatomy**, is even more remarkable.

These are the very mechanisms of how we as human beings operate. Even in this day of such incredible technology, scientists still don’t fully understand the functioning of our human brain, nor exactly how it affects the way we react.

Yet we were created according to the very likeness of God that is God’s Word. That includes everything, internal and external.

God never gets anything wrong so every part of us is made according to the original design made in Heaven and we are made like Him, our Father, for we are His children.

Inside us is the potential for good or for evil,

- in our **brain**, the place of **understanding**,



- in the **cervix** of a woman, the place of **giving birth**,
- our bodies to be the container for good and bad.

So we have the potential to both **understand** and the **capacity** to **birth** both good and evil.

Originally we were designed to walk and talk with God. Eve said that she had been tricked by the '**subtle serpent**.'

In Yoga they refer to the Yoga powers as 'subtle' energies - the aura - as the subtle body.

Subtil: STRONGS 6175 is **Aruwm**: cunning in a bad sense, crafty, but also prudent, wise.

STRONGS 6191 **ARAM** : to be made bare, nude, to be cunning in a bad sense, to take crafty counsel, but also to be prudent.

Serpent : STRONGS 5175 is **NACHACH** : a snake from its hiss.

STRONGS 5172 **NACHACH** : to hiss, whisper a magic spell, to prognosticate, divine, enchant, to use enchantment but also to learn from experience to diligently observe.

The word **Tricked** also means **beguiled**.

STRONGS 5377 it is **NASHA** : to lead astray, mentally delude, to morally seduce, to greatly deceive, but also...

5378 **NASHA** to lend interest, to dun for debt, to exact, to give usury...

5379 of 5387 **NASI** - an exalted one, a chief, a king, a sheik a rising mist, a cloud, ruler or vapour (this is so close to the German word for NAZI!!)

So right from the earliest times in the Garden the Godly system of nakedness without shame, intimacy with God, have been corrupted.

The counterfeit system of the serpent: It was put in place where we are:

- made naked,
- divination,
- money,
- taxed,
- ruled over.

Our God-given abilities and anatomy have been hi-jacked by the 'serpent' and we need to redeem them.

Revelation. 22:1 "Next *the angel showed me the river of life, sparkling like crystal flowing from the Throne of God and the Lamb, 2 Between the main street and the river was a Tree of Life producing twelve kinds of fruit, a different kind every month; and the **leaves** of the tree were for healing the nations – no longer will there be any curses.*"

In Latin the word **FOLIATUS** means: Leaved, leafy, an unguent or oil made from the leaves of Spikenard the oil called Nardium or Nard-oil.

Mary Magdalene poured this oil over the feet of our Messiah Jesus Christ of Nazareth.



Mary was a type of the repentant, delivered Bride, who Jesus delivered of seven demons (seven chakras – could this be the deliverance from occult power?)

Lucifer too was made in the pattern of God. He was beautiful, dressed in jewels, he walked on God's Holy Mountain, everywhere he went, music was made.
(Ezekiel 28: 13- 19)



He was perfect in all his ways – *verse 15*, but he became an object of terror, *verse 19*. He also knew somehow he had to get inside man to be able to control him to set up the **luciferian system** of the **antichrist** in the world.

As the serpent, he began to talk to the **woman**. He knew that she was the God-designed **door** to give **birth** here on earth, the one with the womb.

The interesting fact that one of the trees of **life in the human anatomy** is in the **birth canal**. Lucifer needed a **womb** to birth things through, just as God did with Mary the mother of Jesus.

He first tempted her with her eyes and created the desire for her to eat. This is the counterfeit process that the Word of God describes in **Ezekiel 1 & 2**.

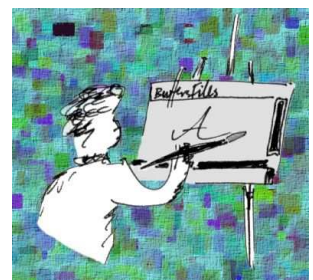
Ezekiel got a vision from God – a picture, he was shown something.

Ezekiel 2: 2 *“The Spirit entered into me when He spoke to me and set me upon my feet, and I heard Him speaking to me.”*



A WORD OF WARNING TO ARTISTS

We don't always associate the **creative process** with the **spirit world**, but we can be exposed to a form of 'channeling' and unless we understand **soul power** we can be channeling the wrong spirits, spirits that lead us to idolatry and away from God. The passion of kundalini is the **false creativity** of our Father, the Creator – the God who created all there is.



Innervision is the process that Lucifer has used ever since that very first encounter in the Garden. The **very earliest images** of the Garden that have been drawn from the inner pictures of men and women - the **artists** - have been of the **serpent as a woman**.

Lilith

The half-woman / half-serpent coiled around the tree, called by the Jews the demon **Lilith**. This serpent/woman who now sits painted in the **tree** at very centre of the **Sistine chapel in Rome**, regarded by millions as one of the **most sacred places** on earth. (The famous Sistine chapel ceiling painted by Michael Angelo) She holds one of the very central positions in the Church of Rome.



What is an image of the serpent Lucifer/ Lilith doing in the church and given such a place of adoration?

Our Father Yahweh, warns us very clearly in the Second Commandment of His Word not to make images of anything in the heavens above or on the earth beneath.

Why have we elevated a figure acknowledged by the Jewish faith as a demon or called the '*first wife*' of Adam, to this position?

The description of **Lilith** from the **Zohar** describes her uncannily like the whore of Babylon that the Apostle John saw in the book of **Revelations 17**.

"She adorns herself with many **ornaments**, like a despicable **harlot**, and takes up her position at **crossroads** to seduce the sons of man. When a fool approaches her, she grabs him, kisses him and pours him wine of **viper's gall**.

As soon as he drinks it, he goes astray after her. When she sees that he has gone astray after her from the path of truth, she divests herself of all her **ornaments** which she put on for the fool.

Her **ornaments** for the seduction of the sons of man are:

- her **hair**, long and red like the rose,
- her **cheeks** are white and red,
- from her **ears** hang six Egyptian cords and
- all the ornaments from the land of the East hand from her **nape**
- Her **mouth** is like a narrow door, comely in its décor,
- her **tongue** sharp like a sword,
- her **words** are smooth like oil,
- her **lips** red like a rose and sweetened by all the sweetness of the world.

She is dressed in **scarlet** and adorned with forty ornaments less one. Young fools go astray after her and drink from the cup of wine and commit fornication and strays after her. What does she thereupon do?

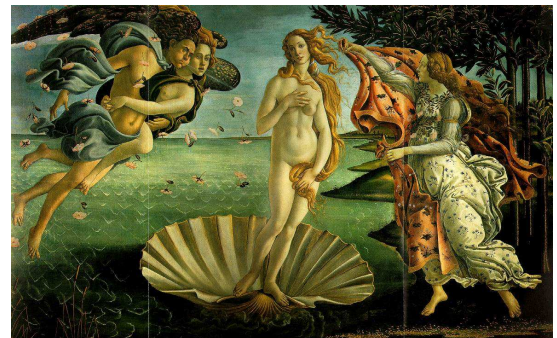
She leaves him asleep on the couch and flies up to heaven and denounces him, takes her leave, and descends. That fool wakes up and deems that he can make sport with her as before, but she removes her ornaments and turns into a menacing figure.

She stands before him clothed in garments of flaming fire, inspiring terror and making body and soul tremble, full of frightening eyes, in her hand a drawn sword dripping bitter drops. And she kills the fool and casts him into gehenna.”

This is an amazing description of the deception of **goddess worship** and the ‘*power of the goddess within*’ the Goddess Kundalini activated and awakened by the Kundalini Yoga. This is the beautiful seductress who transforms into a murderous crone.

Venus:

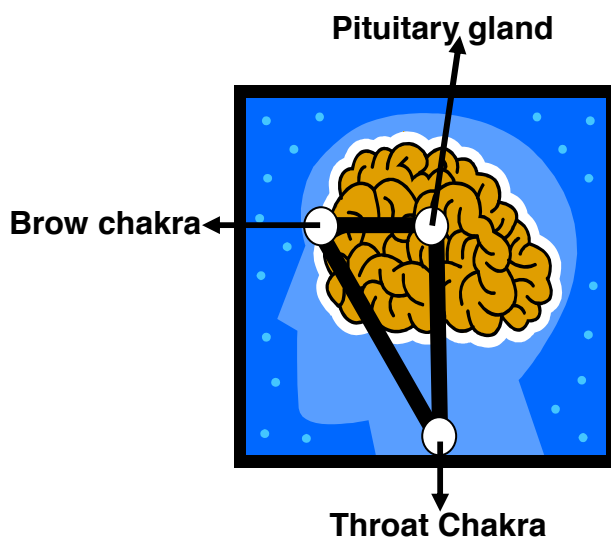
The very earliest archeological images found all over the world, made by humans, have been of women, figures called **Venus. Venus is a name for the female form of Lucifer.** She is called Diana Lucifera or Mary Lucifer.



The power of imagery is generated in our brain. Images are an internal process first.

The inner sanctuary of yoga is the golden triangle, the “holy of holies”, the pyramid or throne is in the brain. It is the mid brain.

The Golden Triangle:

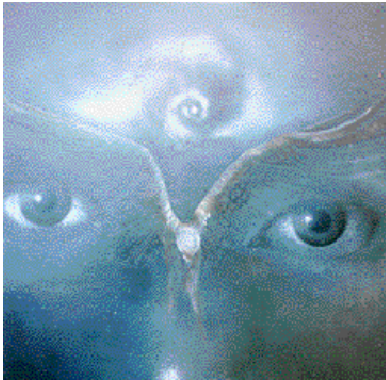
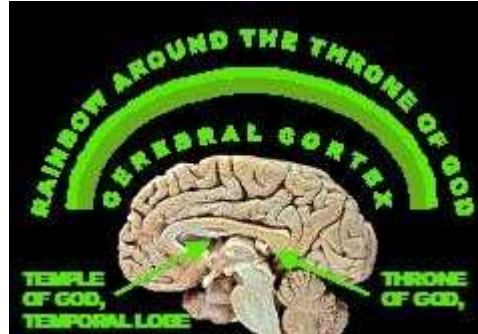


Inside the pyramid or throne is the:

- hypothalamus
- thalamus
- hippocampus
- amygdala
- pituitary gland.

All these are located in the mid brain in the seat of the **golden pyramid throne**.

The golden triangle sets us up for psychic powers and witchcraft to be released to the inner brain to render the brain at the top of the tree powerless.



The entrance is through the **third eye** – all the energy of the **sun, psychic power, the latent power of the soul** is released in the opening of the third eye. This is the occultic eye and it opens the eye to the false. The eye of false visions, the false prophet, false imaginations, and often the mouth of the false prophet.

The Mid Brain:

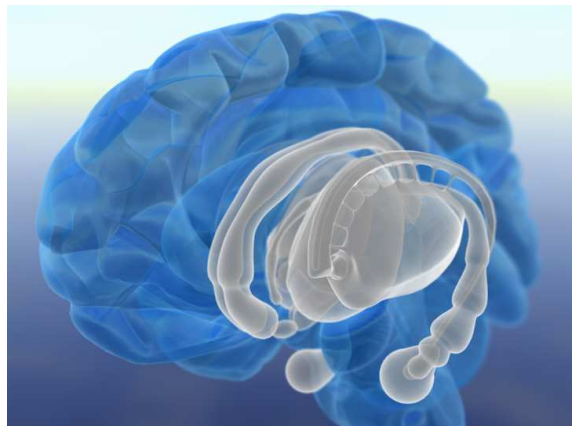
From the third eye into the mid brain the psychic power flows into the **hippocampus** known as the limbic system – **storehouse of sensory memory**.

This plus the **pituitary gland** and the **hypothalamus** affects almost every function of the body.

The **five senses** are affected and the third eye will affect spiritual seeing, hearing, smelling, touch, taste and discernment.

The psychic power affects the five senses and the five lobes of our brain and the kundalini serpent powers aim to render us powerless in the mid brain into the negative.

The mid brain is impacted by emotions, feelings of anger, fear, depression, sexual arousal, pleasure and sadness.

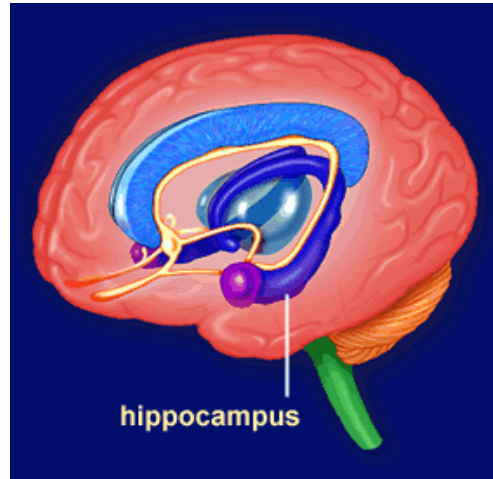


The Hippocampus:

This is the **temporal lobe** of the brain and as psychic power hits the middle brain, severe **mental illness** can occur. Schizophrenia, depression, mood disorders, Alzheimer's disease, autism, Tourets syndrome, epileptic seizures, memory disorders and trauma, loss of consciousness can occur.

If the Hippocampus is damaged, a person can become a prisoner of the past. This is the organ targeted by **satanic mind**

control programmers. In many of these issues there are no medical answers except to medicate or sedate with medication.



We need to expel and drive out all psychic intrusion and power out of the golden triangle and out of the specific lobe.

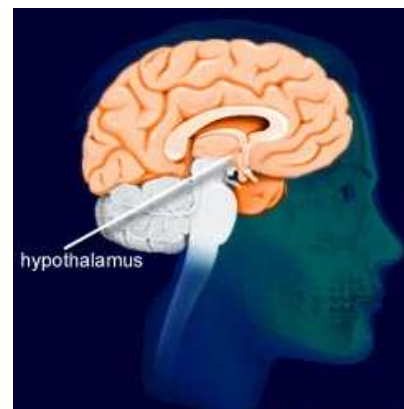
Command the serpent to be driven out in the Name of Jesus and bruise his head by the power of the Blood of the Lamb and the victory of the Cross.

The kundalini serpent is the golden glow of the sun; the energy force of great evil; of Lucifer himself. The serpent must be driven out of our minds and our homes.

We need to declare healing of all unhealed memories that are bound in a prison of the occult and witchcraft and break the paralyzing powers of the past.

The Hypothalamus:

This is the **temporal lobe**. It is also inside the golden pyramid, the throne, and can be rendered powerless by the psychic powers of the serpent. It is the **temperature control centre** of hot and cold sweats, hunger, appetites, weight gain or loss, sleep, shivers, hearing, memory, visual capacity and reading. The Hypothalamus affects the secretions of our Endocrine systems and can be affected by the serpent power on the throne of our endocrine systems.



Eph. 4:23 *"23 And be constantly renewed in the spirit of your mind [having a fresh mental and spiritual attitude],"*

The serpent comes to kill and destroy the Mind of Christ. He spoke to man in the Garden and he still has a voice to rendered us powerless and deceive us.

He wants to rendered powerless our brains into not functioning – malfunctioning – into being passive, believing the false and to loose our God-given capabilities. Our inheritance is that we have been given the Mind of Christ.

1 Cor. 2:16 *“16 For who has known or understood the mind (the counsels and purposes) of the Lord so as to guide and instruct Him and give Him knowledge? But we have the mind of Christ (the Messiah) and do hold the thoughts (feelings and purposes) of His heart.”*

The serpent wants to steal from our minds our full potential, to rendered us powerless, cripple us physically and emotionally, to rendered us powerless and make us loose our full potential and to kill the true apostolic / prophetic mind, voice and visions.

He comes to “bruise our heads”, blank-out our minds, and send us into a dream / sleep-walking state. We must drive out the serpent from our minds, bruise his head and destroy his assignment to render powerless the mind, head and body of the Body of Christ.



It is stated that the average person only uses 10% capacity of their brain; we need to activate the other 90%!

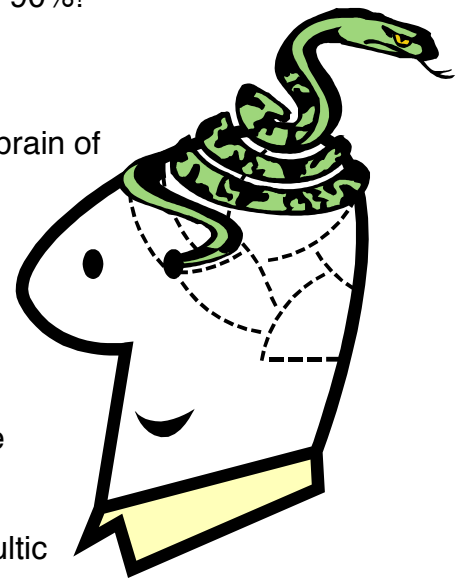
The Throne / Crown Chakra

The throne or seat of the serpent satan is in the head or brain of the person.

The doorway to the throne room, the holy of holies and false glory and vision is to open the third eye or the occultic eyes. This eye is situated in the middle of the forehead between the eyebrows.

Many of us has had our third eye opened, the eyes of the prophetic, just as Adam and Eve’s were.

Our fallen nature opens our third eye, we can inherit occultic vision and then we become “illuminated” and perceive ourselves as gods, goddesses or those who have access to “secret” knowledge.



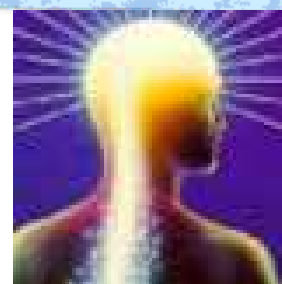
Self-realization, illumination and consciousness occur at the top of the tree of knowledge – the false tree. The expression the “light goes on” originated from this process.

The eyes and vision of the false prophet are opened and we become one with the serpent, the false prophet of all false prophets.

In **sex magic – tantric yoga** – the female releases her secretions on a leaf and the male seed is placed on the third eye. The ceremony is called the five part or five-fold eucharist and is carried out in a circle (the ouroboros, the tail-eating serpent).



The head is the place of authority. Jesus bruised the head of the serpent. The head of the serpent is his place of so-called perfect illuminated wisdom, but the tree of knowledge in fact opens the eye to the worst knowledge of the occult.



This level of wisdom and knowledge of Lucifer is the knowledge of the magi and magicians. It brings the unleashing of the latent power of the soul which Yonghi Cho wrote about in his book of the same title.

If we are to be true clean, pure prophets and priests, we must cleanse the throne of satan in our brain with the Blood of Jesus.

When our eyes are opened to perversion and evil, satan's eyes of illumination will take us into the inner sanctuary, the pyramid throne and into false visions, false revelation and false glory.

Tantric rituals called Tantric yoga means sexual energy. It releases kundalini serpent power into the paranormal or supernatural realm that is evil and false. Tantrism, sexual energy and yoga is part of the pagan religious system and part of the sex cult. **YOGA CANNOT BE CHRISTIANIZED!**



This is the true origin of Goddess worship, Lucifer in the guise of the beautiful goddess of love who for centuries has activated:

- the "fires of creativity"
- the "fires of inspiration"
- the "fires of worship"
- the "fire of love" *but also*
- the "fires of destruction, hate anger and death and war, mayhem and destruction".

Her dark side is the killer of men and children through **abortion, rape, war and poverty** – the goddess who demands blood sacrifice.

Man's Creative Ability:

The images produced came from man's inspiration and has formed the world we see.

The word *inspiration* means:

- to stimulate,
- activate, especially **creative** activity,
- from the Latin *inspirare*: to **breathe**.

When God created man by breathing into him, He imparted the capacity for good or evil.

Creativity is a God-given gift, but Lucifer has **perverted** our creativity, our worship and has turned us blind, willing slaves to his **idolatrous system**.

Yoga, especially *Kundalini Yoga* and all New Age teaching, perverts our creativity when they activate the Kundalini force.

This same force is behind the **women's liberation, lesbianism** and the awakening the "*goddess within*" movement. This is what Watchman Nee calls Soul power, the '**latent power of the soul**'.

It is passing through this channel of the **Sushumna** that the person leaves his physical body at will (astral travel) in such a manner that he can retain full consciousness on higher planes and brings back into his physical brain a clear memory of the experience." This is often the root of false visions and experiences.

The union with the 'divine' is the *Kundalini*, the **serpent fire** which is activated through Kundalini and other forms of Yoga, from where we get the cute little '**Yogi Bear**' of Walt Disney cartoons, which is rooted in New Age and Eastern Kundalini Yoga.

Yogi: a teacher of Yoga,

Bear: a form of the goddess. (Goddess Beara. The Great Bear – Usa Major.)



Kundalini is a form of *Tantric Yoga* and is the "supreme" form in all Yogas. It is Yoga activated by sexual practices.

Pagan followers regard Kundalini as the seat of absolute knowledge.

I quote:

*"It is described as one of the greatest energies, where the whole body starts glowing because of the rising of the **Kundalini**, because unwanted impurities in the body start to disappear with its fire. The body of the seeker looks proportionate, the eyes look bright and attractive and the eyeballs glow,"*

The meaning of the word **Kundalini** quite literally means “*serpent power*” or “*serpent fire.*”

The word comes from the Indian word ‘**Kundal**’ which means: “*coiled up*” or “*the lock or coil in the hair of the beloved.*” (The Beloved is the name of the Bride in the Bible.)

The uncoiling of the hair or serpent, is the awakening of Kundalini. This loosened hair was the symbol of the priestess / prostitute in ancient religions.

In Greek mythology the goddess **Medusa**, the terrifying form of the goddess has **snakes for hair**, symbolizing to fully manifested, dark, malevolent power of the **Gorgon** whose head was on the shield of the Greek goddess **Athena**. This was the image whose gaze paralyzed the enemy.

In the very earliest images of **Venus** the female figure is also shown as having **coiled, braided hair**, the forerunner of the modern hair braids and of Rastafarians.

This is the hair style of both the **white and black images** of the goddess – good and evil. **Kundalini** is also called the ‘**coil of rope**’, described as the thickness of a boars hair – this is a manifestation of **VASUKI** the ‘*great snake*’ the ‘*jute rope*’ - origin of the **Indian rope trick** used by both **devatas** (gods) and **Asuras** (demons) and performed in India daily.

In **Nepal** this snake deity is known as **JANGULI** who appears at the **hub of the wheel of Samsara** and is the symbol of **unprovoked or uncontrolled anger**.

It is the **dual aspect** of great ‘**bliss**’ (good) and great **anger** (evil) that form the very nature of the Kundalini. This power is activated by all forms of mind control, labeled ‘*the internal controls*’ especially by the **military**.

The Nazi’s called it the ‘*force of the VRIL*’.
In Sanskrit the word means “**circular power**” from the word Kundala is a “**coil or ring**” or “**that which is coiled up.**”



This is the origin of the **ouroborous**, the tail eating serpent who formed the **Uraeus** crown of the Pharaohs of Egypt.



This serpent was called the **AAR, AART, AARTU** one of the roots from where we get the word **art** (creative Kundalini energy).

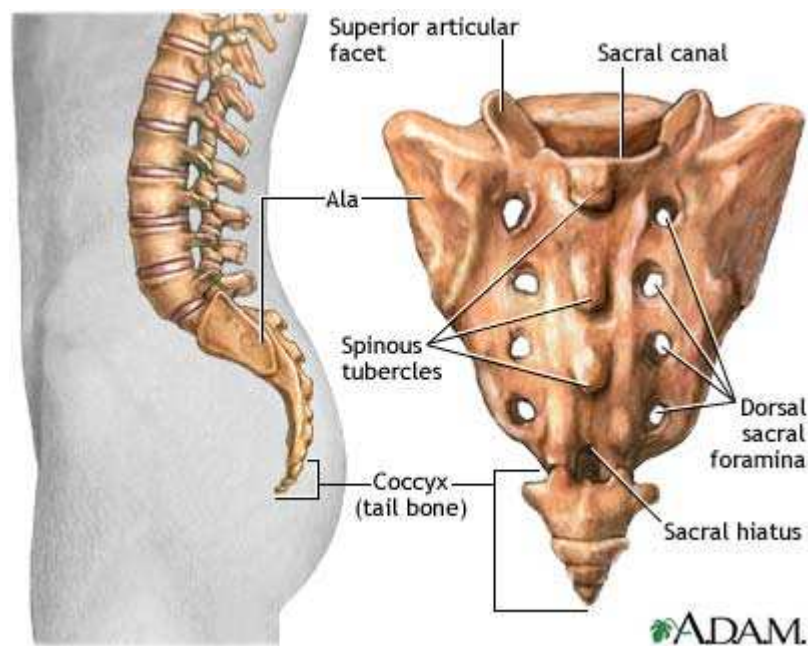
It was the symbol of secret initiation and the sign of the full manifestation of occult sight through the **third eye** of the *Kundalini serpent* on the forehead of the pharaoh. It revealed the full activation of occult knowledge.

It was called the **Kundalini crown** which manifested as the Pharonic serpent. This is also the symbolic meaning behind the **plumes** on the helmets of **Athena, Britannia**, and many other goddesses, but also in the ancient headdresses worn by the **Tibetans** and **Hawaiians** still being worn today and echoed by the '**punk**' hairdos of the today's youth.



This Kundalini serpent coils at the base of the **human spine** in a triangular bone called the **Sacrum**. The Latin name is '**OS SACRUM**' - the holy or sacred part of the body.

In the human anatomy, the **SACRUM** is the **triangular bone** situated between the dorsal and caudal, two ilia between the **5th lumbar vertebrae** and the **coccyx**. It is formed of **5 united vertebrae**.



Sacrum in Latin means from the root word *Sacer*:

- a place *consecrated to a deity*.
- A *sacred thing*,
- Holy or **devoted to a deity for destruction**,
- **an offering**,
- **a victim for sacrifice** .

Here too is the double meaning for good or for bad.

The coccyx is called the cuckoo bone named by Galen the Greek physician who thought it resembled a bird. “*Kokkus*” is the Greek word for bird.



The sacrum is better known as the “sacred bone of witchcraft”. This is connected to kundalini activation through **sodomy**. Any form of trauma causes a major awakening of the serpent to release psychic energy force through **sex magic**. This explodes magic to open up the “royal highway” starting at the back passage going up the backbone to the throne pyramid in the mid brain. The sacrum has five parts – the first, second, third, fourth and fifth sacral segments.

(Please see The Defiled Bride – Sodomy and Sexual Abuse available from Kanaan Ministries.)

The ancient **Greeks** were aware of this and called it **HIERON OSTEON**, noting that it was the **last bone to be destroyed when a body was burnt** and thus attributed supernatural powers to it.

In the **West** it was associated with the sign of **AQUARIUS** (the new Age) as the **Holy Grail**, the container of the water of life and thus to water spirits.



In **Egypt** it formed the **DJED pillar**, the **Erica tree** in which Osiris was contained, this pillar formed the image of the tree (spine) with the branches lopped off.

The image became fused with **the sacrum of Osiris** which corresponded to the **immortal seat of the god’s vitality** and forms the ‘**root chakra**’ where the Kundalini vital energy resides coiled up in Yoga. This energy can be either male or female as it channels up the sun or moon channels and can be androgyneous.

The female energy is a manifestation of the goddess **Kunda** or *Kundalini*, called by a myriad of names, some of whom are:

- *the first born Shakti, or Sakti,*
- *Isis,*
- *the fire witch,*
- *Kali who is the black Venus,*
- *the black Madonna,*
- *the black queen – black being black magic, evil, occult power.*

but she can also be:

- *the Virgin Mary,*
- *the Great Mother,*
- *the grandmother –Baba Yaga,*

- *the Queen of heaven with her divine child,*
- *or the angel of light – white, “good”, benign, healing but still occult power.*
- *the dove – false holy spirit.*



She is known by a myriad of names from every culture and nationality. This **female side of Lucifer** is either **black or white** as in the **checkered floor** of Freemasonry and the Ying-Yang of China.

This is Diana Lucifera – black / white / dual / the pure virgin / killing crone which the Bible calls the queen of heaven.

Please also work through Prayer of Renunciation – Kabala available from Kanaan Ministries.



KUNDALINI = DRAGON POWERS (Dragon is another term for serpent)

The **dormant female / male psychic energy** contained within a person is symbolized as a serpent coiled in the base of the human spine and stands for the **dragon**.

This is very clearly seen in the **art of China** and in the **dragon powers of Feng Shui and Chinese religions**.

One of the roots of the word “**dragon**” in the **Greek DERKEIN** means: – ‘**seeing**’, the dragon was attributed with **very keen sight**.



The word “**dragen**” forms the root word to draw or sketch connecting it to the arts.

Just as the **dragons guard temples and treasures**, so too it is believed that they guard our **spines**. Kundalini emanates from the **sun** and lies at the core of the earth mother and is the power behind her worship – goddess worship.

It is described as **the ‘force’ that calls us to home** and **the force that can transform our earth vessels into vessels that can make that journey**.

Satanist’s refer to the power of ‘**the force**’ through which contact is made between the infinite, kundalini energy and the finite, physical **sexual energy is its vehicle**.

The soul gains its highest spiritual potential while incarnated in the physical form, when the **great mass of kundalini energy locked in the root chakra** is released to travel up to the crown chakra in the head. It is said to join in union with the infinite.

The **root chakra** at the base of the spine represents our connection to the **feminine goddess** manifest in the body of the **planet earth**, mother nature or Gaia.

The **crown chakra** at the top of our head, represents the **masculine or female or androgynous god or goddess** energy that exists as **pure potential** in the heavens in the non-physical dimensions and radiates to earth within the **Prana** (breath) and Kundalini emanations from the sun.

When the Kundalini has traveled up the spine to meet her divine mate, the **union of spirit and matter** are consummated. The Goddess Kundalini sweeps her followers up in her tremendous passion to reunite with her lord **Shiva** in the crown chakra in climax.



This same technique is used by the **world of advertising** to activate us to buy, to feed the world of commerce today. Kundalini can be activated through the eyes, hence the term the 'evil eye', the force behind all witchcraft.

The manifestation of this feminine power is the primary aim of Kundalini yoga. So what is it and how does it work? We need to go back and look at the origins.

THE CADUCEUS

There are thousands of image variations of the Caduceus, but the ancient symbol has remained one of the most recognized **medical services symbols.**

The symbol that became most associated with the cosmic process of integration and the sacred marriage was the image of a **pair of snakes intertwined in union around the "tree of life."** When they unite, it releases poison in the spirit as exploding magic which actually can kill a person.



The quickest way to activate kundalini is through:

- **incest**

- **rape – sodomy** (William Schnoebelen speaks about the highest secret orders of the occult – they believe that to rape a child anally gives them powers for eternal life – they suck the very life force out of the child. The child later reports memories of searing pain up their spine and a bright light that washes over their brain – kundalini has been activated.)

- or **dedication.**



The caduceus rod is the symbol of the male phallic and rape opens up the spine to become the "royal highway" to the throne of Lucifer – the serpent in the golden pyramid of the brain, to come into his full glory at or over the crown of the head like a cobra's hood.

So the fire of the serpent is released up the spine to take our bodies into false baptisms of fire and false physical experiences.

The power of the serpent is thus released into the:

- electrical system,
- nervous system,
- endocrine system,
- immune system

to begin to destroy a person's body.

Ironically, it is used as the symbol of healing power over many hospitals.

It is a perverted image of the bronze serpent in the wilderness.

Num. 21:6-9 “6 Then the Lord sent fiery (burning) serpents among the people; and they bit the people, and many Israelites died.
7 And the people came to Moses, and said, We have sinned, for we have spoken against the Lord and against you; pray to the Lord, that He may take away the serpents from us. So Moses prayed for the people.
8 And the Lord said to Moses, Make a **fiery serpent** [of bronze] and set it on a pole; and everyone who is bitten, when he looks at it, shall live.
9 And Moses made a serpent of bronze and put it on a pole, and if a serpent had bitten any man, when he looked to the serpent of bronze [attentively, expectantly, with a steady and absorbing gaze], he lived.”

Throughout the Bible the Lord warns about the **worship of trees**, being the worship of the goddess – **Asherah**.

The **Caduceus** first appears as entwined snakes on an engraving on a Sumerian cup, called the *Liberation cup of Gudea* dated about 2,000 BC in which the Prince of Lagas dedicates it to his personal god *Ningiszida* from whose shoulders a horned snake arises. So its earliest images connect it to the human body (spine). It is the cross of Freemasonry, the cross of Lucifer as represented as the serpent on the pole – symbol of ambulance services.

The **worship of the serpent** is as old as man. In the cult of *IRHAN* a deity of the city of Ur, out of which the Lord called Abraham, this deity was a god representing the **river Euphrates**, one of the rivers of Eden.

This deity was later synchronized with the cult of the god *NIRAH* and it is possible that these snakes represent the ancient god *Ea/Oannes* out of whose shoulders flowed the **Tigris** and **Euphrates**.

Ea is the forerunner of the gatekeeper god **Janus** whose keys now sit on the back of the garments of the pope - **The keys of Cybele and Janus – the male and female called the keys of Peter**. This is the false Peter, Peter of Rome and not the Peter of the Bible.

The **origin** of the **caduceus** can be traced as early as 2,600BC to **Mesopotamia**. It was used by the priests in the Eleusinian Mysteries of ancient Greece where it was called the:

Kerykeion,

- the *staff of the god Hermes / Mercury* the messenger of the gods,
- creator of magical incantations,
- conductor of the dead and
- Protector of merchants and thieves.



It was originally a **herald's staff**, sometimes with **wings** (the image of the caduceus at hospitals) or with two white ribbons attached. These ribbons eventually evolved into snakes in the intertwined figure of eight of the caduceus.

In the 7th century the caduceus came to be associated with a precursor of medicine and alchemy, based on **hermetic spells**, and became interchangeable with the rod or staff of the god **Asclepius the god of healing**.

This god was worshipped with snakes in his temple because of a myth that he had received a **divine healing herb** at the mouth of a serpent.

In this corruption of the Bible Truth the serpent is not the deceiver and destroyer **but** the *saviour/healer* who replaces the Messiah, a type of the **antichrist** and by whom the **Hippocratic oath** is sworn by doctors:

"I swear by *Apollo*, by *Asclepius*, by *Hygeia*, and *Panacea* and by all the gods and goddesses..."

In early **Egypt** they called Satan the great serpent **SATA**, the dweller in the uttermost parts of the earth, who was regenerated every day in the womb of the goddess.

This corresponded to Apollo's underground serpent form the **PYTHON**, who the Jews called **Appollyon**, *spirit of the pit* and who was cast out of the servant girl by Paul.

It was the '**pythia**' **priestesses** who were the **Delphic oracles** (the prophetess consulted by political leaders). The 'winged staff' is the origin of the images of winged angels and **fairies** that in Babylon were referred to as demons.

The **winged disc of Babylon** which is the root image was a symbol of the solar god, the counterfeit god of light – the fallen angel **Lucifer**.



Kundalini power can be activated by all the **5 senses** – there is some evidence to suggest that we actually have other senses.

It is activated through,

- *speaking,*
- *sight,*
- *smell,*
- *touch,*
- *hearing,*



but it is also activated by:

- *memory,*
- *light,*
- *dancing,*
- ***meditation,***
- *fasting and rituals,*
- *ceremonies,*
- *festivals,*
- *theatre, movies,*
- *the media,*
- *gym exercises,*
- ***perfumes,***
- *colour,*
- *literature,*
- *sex,*
- *rituals,*
- *intense forms of spirituality,*
- *art,*
- in fact by the whole creative process and
- very powerfully by *symbols,*

of which the caduceus is one of millions.



These ‘senses’ activate subliminal responses within us that often we are not even aware of. Much of the activation is linked through the **Limbic system** of the **brain**.

The Fastest Way to Activate the Kundalini Spirit:

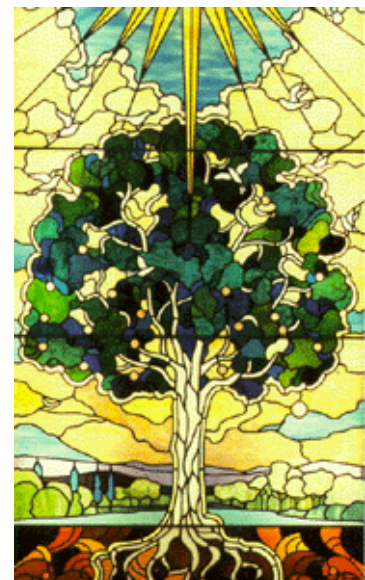
There is evidence that **shock – accidents, trauma, near death experiences, childbirth, menopause** etc.; cause shock to the body that allows the Kundalini to be opened – this is important to understand when dealing with **child molestation, rape and sodomy**.

For thousands of years the snake was a symbol for **dynamic** and **regenerative energies** and of the **creative life force**. The caduceus shows us a pair of snakes representing the male and female polarity united, usually depicting the sexuality of the snake.

Significantly this union takes place around the **tree of life**, which traditionally unites the three worlds:

- *the underworld,*
- *the earth and*
- *the heavens.*

In many cultures the **tree** was the **connecting point** between **heaven and earth** and the **roots** to the **underworld**, it was the **world pole which united**.



The **image of caduceus represents the union of the male and female polarity**, into one whole and the restored harmony of three worlds.

The Caduceus was found in many diverse cultures of the world; **Sumer, Egypt, Greece, India, Europe (Druids) and even in the Americas.**

It is an archetypal symbol, a multi-dimensional image with its roots deep within the **psychic** and conceptual foundations of the human species.

As this symbol evolved between 2,000-1,000 BC it became increasingly associated with the *internal* processes of the individual, rather than with *external* rituals of religion.

No one is exactly sure where this new interpretation of the Caduceus and the **Sacred Marriage** began, but more evidence points to **India** than anywhere else, although it could have originally developed in Mesopotamia and gradually diffused along the trade routes between them. **India is one of the places left on earth where the ancient heritage of the goddess still remains.** This sacred marriage was re-enacted at various festivals in the year by a chosen male and female representative of the god and goddess to ensure fertility through sexual union.

For thousands of years this **Yogic knowledge** was carefully handed down by oral tradition from master to disciple. Kundalini Yoga was always kept very **secret**.

The ancient knowledge merged with more recently created **SIKH DHARMA** about 500 years ago, but it was never taught publicly until 1969 when Yogi Bhajan challenged the age old tradition of secrecy and declared **enlightenment** was the birthright of all living souls and not just royal houses. (Raj yoga)

He saw the world was ready for the '**dawning of the Aquarian age**' in **2010**, and he believed his destiny was to reveal the technology of Kundalini Yoga in order to prepare **millions** for the 'great changes' of the 'new age.'

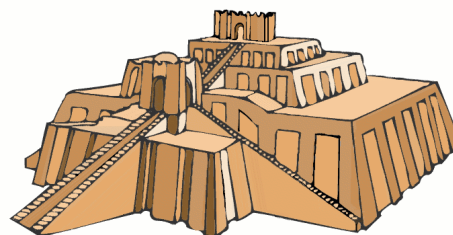
However, this process had already been set in motion in the 1960's with the **hippie movement**, the awakened **drug culture** and the popularization of eastern philosophy through the music of the **Beetles** and other 'pop' music groups. The musical '**Hair**' (one meaning of Kundalini is the '*coil of the hair of the beloved*') ushered in the **Age of Aquarius** with the hit song of that name. This production has been re-released recently.



In history, the **temples** of the goddess served as places where individuals in the community could participate in **sexual sacraments**. There were priests and priestesses whose sole function was to provide **sexual services** to the community.

Most women before marriage had to offer themselves to these representatives of the deities as a **sacred act**.

Chosen members of the community in **fertility rituals** climbed the **sacred mountain (Ziggurats)** to the **sacred chamber** and became **incarnations** of the gods and goddesses in the act of sexual congress to ensure the **fertility of the land**.



Within this spiritual context over a span of several thousand years gradually the **external rituals of the Sacred Marriage** took on a new dimension, meaning and interpretation and gradually it became **internalized**.

That is, instead of seeing the god and the goddess only in terms of external manifestations as being 'out there' the conscious process of mythic association turned inwards, to inside the individual.

This process of **internalization** served as a true breakthrough in consciousness, for now the god and goddess were perceived as **symbols** within the **psychic structure** of each human being.

Followers of this system believed that *within each person reside an inner male and inner female and INNER GOD and GODDESS who through sacred sex became united in ecstasy.*

This is the basis of all **Tantric Yoga**, and become manifested through illicit **sex and pornography**. It is also the root of most forms of ecstatic worship not governed by the True Holy Spirit. God has given us such a perfect gift in the Godly union of man and wife but it has become so perverted.

The Caduceus became the perfect symbol to reflect this new internalization, the pair of serpents intertwined around the **tree**, **covered by the wings of lucifer**, became associated with the **life energy around the human spine** and eventually symbolized our **DNA structure**.



In mythology of old, the goddess on **earth** would ascend the holy mountain **IDA** (in Mesopotamia/ Babylon called the **Ziggurat**) to meet her Lord and Lover, the **Sky god**.

These were human representatives incarnating the god and goddess, so, this story began to be internalized in the human body as the **Ida** and **Pingala**, channels of Yoga.

It is interesting that the major centre of **Cybele's worship** was **Mount IDA**, in **Crete** which was also associated with the worship of **Zeus**.

Mt. IDALIUM in **Cyprus** was sacred to **Venus**, who was also called **IDALIE**. She is a form of **Diana/Venus**, to whom Paul refers to in the book of **Ephesians** - the Queen of Heaven for whom the women baked cakes and refused to stop worshipping in the book of Jeremiah.

THE FEMININE CHANNEL - IDA

This is the **ascending feminine** (named after the goddess **Venus**) current of energy described as within the person activated by Kundalini yoga, called the **IDA channel**.

The name **IDA** means:

- 'god like,'
- to work or
- perform.
- Old English: 'protection *or* possession'

Ida is a variation comes of the name **AIDA**. It is a form of **IDES** (the Ides of March).

In Gaelic the name **AIDEN** means :” *little fire or the firey one*” from the Middle English. **EYEDEN** which is the root of the word Aden or **EDEN** which connects it right back to the garden of *Eden*.

The **stronghold** of **Freemasonry** is *Edenburgh* or **Edinburgh**. (Also called the “Athens of the north”. Athens named after the goddess Athena.)

AIDA –WEDO is the **Voodoo Loa of fertility**, which connects it to both the serpent and to fire.

From the word comes **ADA** “*of noble birth*” but also **ADAMAS** “*hard, adamant, unyielding, inflexible, hard as stone, the diamond*”.

According to the book “Africa Through the Mists of Time”, **diamonds** were sacred to the Moon goddess. Diamonds are the stones of Venus.

ADAMOS, ADAMAS, ADAMASTOS, the ‘*invincible, unconquerable, the inexorable*’ which became the ‘spirit of **Table Mountain**.’

Table Mountain and the strongman **Adamastor** sitting over Cape Town and the Kundalini power. This explains why the New Age opened the stargate on Table Mountain.



Adamastos in Greek means ‘**untamed**’ - the very nature of **Lilith** and the spirit of **Jezebel**. Interestingly, it starts with the name “Adam,” the first human creation of God.

The Female Channel IDA:

This energy is perceived to **ascend** from the base of the spine through the **Ida** channel into the head where it unites with the masculine energy, the **Pingala** channel in a state of rapture (**sexual or ecstasy or ecstatic climax**).

IDA the **left cord**, is:

- **feminine**,
- goddess,
- ascending energy (the goddess climbing the mountain to the god)
- it is connected to the **Moon**,
- to cooling,
- the colour blue,
- to the negative,
- lethargy,
- grossness and
- insensitivity.
- It is negatively charged.

The word Ida means also a ‘*cool refreshing drink*,’ which connects it to nectar (the nectar of the gods). It flows through the left side of the spine. It carries the **Apana vitality**.

Ida also stands for **RAHU – the DRAGON’S HEAD, the CAPUT**.

Caput is the Latin word for:

- the head,
- the top of anything,
- the fountainhead,
- the source,
- *chief*,
- *the seat of understanding*,
- but also sometimes means the *root*.



(In French it is the word CHEF, which links kundalini to cooking.)

It is the **north node of the moon**, connected to *Saturn / Gemini*, it is the cool, lunar channel. This corresponds in the human anatomy to the **PIA MATER** or ‘**soft mother**’ in the human anatomy.

In Yogic terms this is called a **NADI** or channel of energy. It begins on the left hand side of the **root Chakra** and ends in the **left nostril**.

THE MASCULINE CHANNEL – PINGALA

This **masculine** energy ('god') is then felt to **descend** from the head to the base of the spine and is known in Sanskrit **PINGALA** which means 'fiery or red.' The fiery or red serpent.

This may have some association with the **holy mountain** and the **fire** running down its sides as in a **volcanic eruption**. (Sexual climax). Both the Ida and Pingala are described as being "fiery" and "red."

PINGALA, the **right cord**, is:

- masculine,
- god,
- descending energy (the god coming down)
- is connected to the *sun*,
- *positive*,
- *to heating*,
- *poison*,
- *deviousness to the right side*
- *and the colour yellow*.
- It stands for positively charged.
- It stand for **KETU** – the **DRAGONS TAIL** – the **CAUDA**.

Cauda is the Latin word meaning: 'the tail of an animal, a boar's tail, to flatter, fawn upon, to have a tail stuck on' (could it be the root of **sodomy**? The coccyx is the tailbone root chakra of kundalini.)

This represents the **south node of the moon** and is connected to **Mars**. It corresponds to the **Dura Mater** or "**hard mother**" in the human anatomy.

The nerve channel called a **NADI** is the carrier of **solar energy or Prana** and begins on the **right hand side of the root chakra** and ends in the **right nostril**.

These two channels wind their way around the **Sushumna (the central channel)** from the root chakra to the **nose** meeting at the **6th chakra** and polarizing each chakra in between.

Sacred marriages were specifically re-enacted at the conjunction of the sun and moon so the marriage was consummated when the **lunar** and **solar** currents are united through the **spinal chakras**.

The Ketu and Rahu are the **head and tail of the lunar dragon**.



The Tail the **South node**, the **Head** the **North node**.

In **astrology** the dragon's **head** pours down or bestows benefits, while the dragon's **tail** stores up spiritual darkness.



In ancient times the **solar** and **lunar eclipses** were thought to be caused by dragons or serpents swallowing up the bodies of the sun and moon.

The central channel or rod is the **SUSHUMNA**, the grounding neutral cord of the three parts of the rising Kundalini:

- the **ida**,
- **pingala** and
- **susushumna**.

The kundalini energy resides, and the **Kundalini Dragon** is activated in this central channel (the **Arachnoid layer meaning SPIDER**), in the **human spine**.

These two nerve channels intertwine around the central nerve of the spinal column, each of them makes two and one-half turns around the central column of the spine the **Sushumna** or **Shushumna**, as they spiral upward from the base of the spine.

In **Yoga** the **Spinal column** is known as **Meru Danda**. This is the **axis** of the body just as **Mt. Meru** is considered the **axis of the earth or world**.

It is through the minute canal of the spinal column called the **Canalis Centralis** known to Yogis as **Brahmanadi** that the Kundalini arises.

This is the corruption of God's given design of man:

Ecclesiastes 12:6 “6 [Remember your Creator earnestly now] before the **silver cord [of life]** is snapped apart, or the **golden bowl is broken**, or the **pitcher is broken at the fountain**, or the **wheel broken at the cistern** [and the whole circulatory system of the blood ceases to function];”

- the ‘**silver cord**’
- the three-fold cord.
- symbol of the Holy Trinity, the Father, Son and Holy Spirit,

The Biblical explanation of this scripture is:

Death in old age is compared to the breaking of a lamp, extinguishing the flame and loosing of the silver “chebher” or chain by which the lamp is suspended in an Arab tent.

Yogi's believe that the Kundalini energy flows in everyone with a vast untapped reservoir stored under the **fourth vertebrae** of the spinal column. In the **Perineum** in **men** and in the **cervix** in women (the site of the tree of life in the **female cervix** – the **plica palmatae**)

This energy is called *Kundalini*

- or *Kundalini-Shakti*,
- *Bhujangini* or
- *Avadhuti*,
- the psycho-spiritual energy or force,

- which is called the **GODDESS**,
- who lies asleep as a small bulb of energy which is dormant in early life,
- but is awakened when we turn inwards to source,
- to uncover who we are and where we came from,
- and where our true home is.

So when we turn to God, we find Him as Source. When we turn to Yoga, we find satan as source.

This kundalini energy connects to the '**silver cord**' frequency '**bridge**' forming a main current of vertical spiraling energy to the **Pineal gland** at the brain centre, called the 'pillar of light.'

Followers of Kundalini / Yoga receives the light of "someone" called:

- the '*soul light*' or
- '*radiance*'
- the '*I AM*'.

(This is the name of the New Age programming called 'I Am'. It is done in South Africa and Israel, an off shoot of Est programming [New Age programming in America.]

In:

- *Hatha*,
- *Raja*,
- *Tantra* and
- *Kunadlini yoga* ,

Kundalini is seen as the individual's form of **universal feminine life force** or **PRANA-SHAKTI** (*goddess power.*) In the ascent to the brain it awakes dormant areas where it can unite through the **Sushumna nadi** with the **masculine** force of **SHIVA**.

In **Tantra** the Kundalini is visualized as a **coiled serpent covering her face WITHIN** the opening of the **Sushumna nadi (spine)** where she lies coiled **three and a half, five or eight times**, depending on the teaching, in an area called the **KUNDA** or cavity – the fourth vertebrae.



The **fire pit** used in Tantric and New Age and **Indian fire walking rituals** is called the **KUNDA**. Counterfeit of the stones of fire of the Bible.

This serpent represents the unlimited potential for **action** and **creativity** within us. This is the **origin** of the '**fire of inspiration**' in the **arts**, '**the consuming passions which drive us**'. Many famous artists such as Vincent van Gogh were driven **insane**.

This fire does not come from Yahweh!

The New Agers and Yoga practitioners describe the effects of uncontrolled Kundalini awakening as likened to an **electrical surge blowing** up your PC or sensitive electrical equipment.

“Only when one attempts to rouse the energy latent in the inner layers, does the dangerous serpent fire begin to show itself. This is the serpent fire as a ball or sphere of fire or energy, the ball made up of layers, like a ball within a ball, within a ball”. (Remember the song: ‘Great balls of fire’?)

In **Kabbala**, this is the image of the ‘world of spheres’ the ‘husks’.

In the **Babushka dolls** from **Russia**, the doll is within a doll. They represent the great mother.

Kabbala (Cabala) is just the same as eastern Yoga; one is **Hindu** the other **Hebrew**.

They are in essence the same. This fire travels up the spinal column using the three lines of **Sushumna**, **Ida** and **Pingala** simultaneously.



KALI

In Tantra this uncontrolled force is described as

- the goddess *Kali*,
- the *terrifying aspect of the feminine force*,
- the *black goddess with bulging eyes*,
- the *destructive/ creative aspect of the goddess*.

“Kali in her negative aspect as **CHAMUNDA/ CHINNAMASTA/ SHYAMA**. She is one of the most important Tantric **DASAMAHAVIDYAS**.

She is the symbol of the active cosmic power of **eternal time KALA**.

The **Celtic** version of the **black kali** is called **Caileach** or **Bridget** the **BRIDE**. (*this is the false bride – Kala in Hebrew means bride.*) She is called the spirit of sovereignty – the one who reigns over all.

Kali is the very power of annihilation, through **death** and **destruction** through which her seeds of life emerge.

Just as the destruction of the seed leads to the birth of the tree, so Kali is the embodiment of creation, preservation and annihilation.

She is a moon goddess, the queen priestess Isis, wife of Shiva.



She inspires love and awe at the same time.

She is '**Black**' so all names and forms disappear into her (**MAHANIRVANA** Tantra - where we get the word **NIRVANA** the full manifestation of her power through the **crown chakra**.)

This deity of **blackness** is identified with '**pure consciousness**'

In Tantric hymns she is described as '**DIGAMBARI**' – garbed in space – her nakedness.

She is free from all covering of illusion. Her disheveled hair "**ELOKESHI**" forms a **curtain of death** (the hair connects to the name of Kundalini 'the uncoiling of the hair of the beloved'.)



- She is the black goddess of death, she holds a cup of blood in her hand.
- She stands with her foot on her husband, Shiva's body.
- Kali has the sickle of Druidism, the decapitator of heads of authority.
- Decapitation of the thirtieth degree of Freemasonry.

Yet she is **full-breasted**, her motherhood a ceaseless creation (she also appears as emaciated a manifestation of **Anorexia**.)

Her garland of **fifty human heads** represents each one of the letters of the **Sanskrit alphabet**, which symbolized her repository of **power** and **knowledge**. The letters are **sound-elements** through the power of **mantras**.

She wears a **girdle of 'human hands'**: hands the principal instruments of human work so they signify the **action** of **karma** or accumulated deeds to be enjoyed in subsequent births and constantly remind one that freedom is conditioned by the fruits of one's actions.

She has snake bands of a priestess around her arms.

Her **blood red tongue** signifies the power of **RAJA –GUNA** the kinetic force which gives impetus to all activities.

Her sacrificial **sword** and **severed heads** symbols of dissolution and annihilation directing to us 'shed ego.' She cuts off heads of demon – the false deliverer.



Her **three eyes** govern the forces of creation, preservation and destruction (two eyes plus the third eye.)

Her **white teeth** symbolic of *Sattva*, intelligence 'stuff', which suppresses her lolling tongue, are indicative of *Rajas*, a determinate level of existence leading downwards to **TAMAS – INERTIA**.

She carries the **sword** of physical extermination with which she cuts the *thread of bondage*, her two hands dispel fear and exhort physical strength.

She is the changeless primordial power **ADYASAKTI** acting in great drama to awake the unmanifested **SHIVA**, a passive onlooker.

Shiva:

He is part of the **trinity** of **Brahma**, **Vishnu** and **Shiva**.

Shiva is the ruler over the **head**. His consort is **Kali** (inama of Sumeria).

Shiva consummates with **Kali kundalini** – they form the **serpents of death** or **Shakti**. They are the "divine couple".

Shiva is the destroyer BUT he has reproductive power. He is represented by the phallic. So he is the life-taker and life-giver.

His **cult vehicle** is the **white bull**. He is similar to Osiris of Egypt.



In **Egypt Osiris and Isis** form the "divine couple".

At consummation the **lightning bolt** of the bull is released.

At consummation the **lightning bolt of Baal** is released to each chakra.

- he is in the lotus and cobra positions of Yoga.
- he is adorned with snakes and the crescent moon.
- he is consumed poison to save the world.
- he has three eyes, four arms, a garland of skulls and snakes around his neck like a Masonic noose.
- there are snakes on his armllets.
- his body is sneared with ashes.

If his foot is placed on a person's head, they will be reduced to ashes. The union with Shiva is sex alchemy or sex chemistry or sex magic followed by occult miracles.

Matt. 24:24 “24 For **false Christs** and **false prophets** will arise, and they will **show great signs** and **wonders** so as to **deceive** and **lead astray**, if possible, even the elect (God’s chosen ones).”

Their inseparable union reflects non-duality.

In Hindu mythology there are four ages:

KRITA – YUGA the ‘golden age’ the age of joy or innocence of man.

TRETA-YUGA: (Yug is the Indo-European root of yoke.) The age of **silver** or that of **fire**, the supremacy of man and of the giants ‘sons of god’

DWAPARA-YUGA: the age of bronze, a mixture of impurity and purity, the age of doubt and at last our own

KALI –YUGA: or age of **iron**, darkness, misery and sorrow. In this age Vishnu had to incarnate himself in Krishna to save humanity from KALI.

This is the false Christ. As consort of Shiva, goddess of death and human misery, **Kali represents the ‘fall of man.’**

I quote from the article “*We have to rid ourselves of Kali before we can ever reach peace.*”

This all sounds quite ludicrous until we realize that this feminine goddess energy is the exact form of the ‘owl’ goddess **Lilith** that the **Illuminati** and **Governmental elite worship** in **Bohemian Grove**, America, and in whose image the streets of **Washington** was laid out.

This is the female ‘demon,’ assigned to the central position in Jewish demonology, but who is now heralded as the ‘**Voice of Jewish women**’ throughout the world by the magazine, **Lilith**.

This is the goddess, who as **LILLAKE** squats in the tree of the Babylonian goddess **Inanna** hence her name the ‘**squatter**’ (squatter camps?)

This is the whore **LILITH** called the ‘*left hand of the goddess*’ **Inanna** who stands in the doorway of the temple luring men to have sex with the goddess.

She is called **ERISHKIGAL** the goddess of the great below, **Lila of Sumeria** who formed part of the **Lilu** or *evil croucher demons*.



These '**crouchers**' in **Europe** are called **SHEELA-NA-GIG** from where we get the **Australian** word '**sheela**' describing a woman.

These demons that crouch at the door are called '**women who expose themselves.**'



They sit over the door ways of sacred places and in churches all over Europe in male and female form called 'images of lust'.

In **Genesis 4:7** the Lord warns **Cain** about '**sin who crouches at your door: its desire is to master you, but you must master it.**' In Biblical translation the phrase is sin is a "**rbs**" (**rabisum**) – *Hebrew root word meaning to crouch.*

The **Akkadian** word is '**rabisum**' a term for "demon." "The vagabond" – an evil vampiric spirit who lurks to attack people at entrances. They are demons of hell who live in the desert of anguish and attack newly arrived souls as they travel down the bone road to the city of the dead. They are called "seizers" in Gen. 4:7 this demon is called **SIN**.

Gen 4:7 "7 If you do well, will you not be accepted? And if you do not do well, **sin crouches at your door; its desire is for you, but you must master it.**"

This is:

- the Kali,
- black Crone,
- the Cailleach ,
- the 'night hag '
- succubus,
- Scotia after whom **Scotland** is named.



ISLAM AND KALI:

She is incarnate in the **black stone of Mecca**, - **EL KA'BA** means goddess, '**the old woman**' who is served by the *Beni Sheybah*, - **sons of the old woman, the hereditary guardians of her shrine in Mecca.**

The '**hidden initiatrix- the blackness that births the 'light of Islam**' whose '**yoni**' is the **black meteorite stone** kissed by millions in ignorance that it is the '**vulva of the goddess**' and they are in fact performing cunnilingus (female oral sex) to her and to whom they pray and fast every day.



The name **Shaybah** comes from the root **SHEBA**, the **Queen** who came to Solomon (2 Chronicles 9)



This is **Lilith, Queen of Smargard** also called '**queen of the south**' – **basilissa notou**' according to the Bible and to Jewish Mythology.

It was she who brought and brought **666** – 120 talents of gold.

- **666 is the number of ISIS** the goddess, the 'white form'
- the *Maiden/ mother/*

Madonna form of black Lilith,

- the black *Matronit* of the Jewish faith, worshipped by millions,
- both, as the pure '*virgin mary*' and
- the '*black Madonna*.'

Raphael Patai in his book the '**Hebrew Goddess**' states:

*"She started out in **Sumeria** and **Kabbalistic** faiths lowly as a she-demon whose activities were confined to the nether realms of existence, which was associated with impure nocturnal animals that pulled man down to her own base levels.*

*Then in both religions and many others she succeeded in working herself up as it were to the higher rungs on the scale of numina until she became an undoubted goddess in Sumer and the consort of God in kabbalism as the black Matronit. - **The false bride.**"*

In Rome St. Peter's basilica of the Roman Catholic Church was built on what was called in Latin "Vaticanus Collis" – the "hill or mountain of prophecy". Collis means hill or mountain.

Vatic is the L. Vates – the Druid word for prophet.

Vaticanor means "to foretell or prophecy, to rant, rave or talk wildly."

Vates were "tellers of the future".

Anus means an old woman or hag. This is the Crone / Kali – the kundalini.

Old women were the "sybils", the ones who "knew". The four "sybils" sit enthroned on the ceiling of the Sistine chapel painted by **Michael Angelo** alongside the image of Lilith – the serpent woman of the tree of knowledge.



Anus is the anatomical term for the back passage through which the kundalini is activated by **sodomy**. It is called the “gate of the old woman”.

According to the **Indian guru Muktananda**, the Kundalini has **two aspects**:

1. “One aspect is perceived as the outer ‘cosmic’ energy of spiritual life force. In **China** this is known as **CHI**, in **Japan** it is known as **KI**, in **India** it is known as **Prana** and in the **west** as the **holy spirit – the false holy spirit**.”

He says we all have limited forms of Kundalini running through us for it truly is the ‘life force’ the Kundalini energy that pervades the world.

2. The second aspect is the part that lies asleep...the goddess within...”

The kundalini lies ‘asleep’ as a small bulb of energy stored at the base of the spine, when this Kundalini awakens it is a dramatic transformational force, that flows through the **Nadis**, the nerve channels of the body, and rises up from the base of the spine via the **sushumna**, as this force reaches the chakras it increases their **spin**, which in turn spews out toxins which raises the resonance **frequency** of each chakra.



This process is likened to changing our wiring from 110V to 220V. The experience is a mixture of joy, terror and rage (the rage of kali). **Each memory and emotion trapped within each chakra must be cleared.**

This process can be very painful both physically and emotionally, but as we complete it we can experience life with a new peace.

It is called the ‘**call of the goddess**.’ This in reality the call of Lucifer - Dianalucifera.

It is the same ‘**call of Inanna**’ experienced thousands of years ago by priest and priestesses in **Babylon, Greece, China, India** and about every other nation, who emasculated themselves in ecstatic worship of her, becoming **transsexual eunuchs**, bound by sadistic ritual pain and sexual perversion. It is the counterfeit of the True Calling of the Lord.

In the book of **Revelation 13:5** it is the **Dragon** that gives the power to the image of the **beast** whose number is like **666** so,” *that the statue can actually talk and cause to be put to death those who would not bow down and worship the image of the beast.*”

Revelations. 16:13 *“and I saw three loathsome spirits like frogs leaping from the mouth of the **dragon** and from the mouth of the **beast** and from the month of the **false prophet**”*



Exodus 8:3 “3 And the river shall swarm with **frogs** which shall go up and come into your house, into your bedchamber and on your bed, and into the houses of your servants and upon your people, and into your ovens, your kneading bowls, and your dough.”

1 Kings 22:21-23 “21 Then there came forth a spirit [of whom I am about to tell] and stood before the Lord and said, I will entice him.
22 The Lord said to him, By what means? And he said, I will go forth and be a lying spirit in the mouths of all his prophets. [The Lord] said, You shall entice him and succeed also. Go forth and do it.
23 So the Lord has put a lying spirit in the mouths of all these prophets; and the Lord has spoken evil concerning you.”

Frogs are symbols of unclean ‘water’ spirits. The ‘**mandala**’ the **Yantras** of **Yoga**, are sometimes called ‘**the frog**’ - symbol of the -‘**great frog Mahamanduka**’ - who was said to uphold the universe and was a symbol of **enlightenment**.



Interestingly, in the centre of each **mandala** is the ‘**star of David**’ which is the **star of Venus**. So the whole link to Cabala, to the goddess to the New World Order symbolism (all internalized Yogic systems.) It is the root of Magen David or Star of David.

In Europe, the “**sheelas**” are called **Gargoyles**.

The current **French** word **GARGARISER** to ‘*gargle*’ is the term both, to gargle and GARGOYLE. The stem is not from gargariser but from **GARGOUILLE** and old French word meaning ‘**gullet**’ or ‘**throat**’, out of which the frogs or false prophecies or revelations leap – the throat is a major chakra.

According to myth in the 7th century a **DRAGON** rose up out of the river **Seine** but rather than breathing fire, it gushed forth water. (The river **Seine** was sacred to **Isis**).

His Name was **GARGOUILLE** or **THROAT**. He proceeded to drown the towns around Paris until confronted by **St. Romain**, the archbishop of **Rouen**, who made the sign of the cross with his two index fingers.

Throat was then led tamely back to Paris his head cut off and mounted on a building hence the word **GARGOYLE**. These became ugly – black crones called women (and men) who expose themselves – immortalized in stone as the waterspouts in cathedrals.



The Calleach / Kali. The Word **Calleach** comes from *Caledonia*, the 'land ruled by **Cale / Kali**, which forms central **Scotland**. After whom **California** is named.

Gullet comes from the word **Gully**, which means in Middle English **GOLIATH a GIANT**.

From the Hebrew name **GOLYAT, GOLIATH**. A dweller who lives by a gullet or Old French: **GOULET** the neck of a bottle.

From this we get the word **GOLLY**. (Images of **KALI** look just like those of the black **Golly-wog** dolls.) Golly was the word used by **negroes** meaning 'by God.'

The medical condition called **Agromelia** is a physical condition which causes *giantism- gigantism*, from the Greek **GIGAS a giant**.

It is caused by an excessive production of **homones** from the **Pituitary gland** one of the glands affected by *Kundalini energy*. Could there be a connection to the Goliath that David slew, the 'dragon who roared' and Kundalini activation.

The **Gaelic** root of the word **Goll**, is **Gall**, *Gall is 'wormwood'* the bitterness of the plant **Artemesia**, named after the goddess **Artemis**, and which formed the base for the toxic alcoholic beverage **Absinthe** which ruined the lives of so many **artists**.

Absinthe means to "rot the brain". **Wormwood** is also called **Chernobyl** and also **Apollyon**. Cherno means black. "Byl" means white in Russia. This means "black plant".

Chernobyl – the site of the nuclear disaster.

The **star** called "**wormwood**" of **Revelations 8:11**.

Rev 8:11 "11 And the name of the star is **Wormwood**. A third part of the waters was changed into **wormwood**, and many people died from using the water, because it had become bitter."

To gall means to:

- vex,
- annoy,
- to harass,
- humiliate,
- to make bitter,

exactly what the spirit of Lucifer does.



Gall is the root of *Gallic*. The **Gallic** people are the **Celts**. Bitterness causes internal toxicity.

[Could this be the dragon, the fierce feminine energy called the 'indweller' the *latent Luciferian powers* that have held man captive for generations, that will empower the forces of the anti-Christ?]

In **Europe** the ***Cailleach Hags*** were called '*the spinners*' the **GIANT HAGS**, called '*stone raising spinners*' who built the **megalithic stone structures** all over **Europe**.

They were '**giant guardians of the land**', powerful **spirit women** and **goddesses**, called '**fata**' who walked across the land carrying the stones and '*spinning*.' Powerful territorial spirits of storm, death and destruction venerated to this day through festivals.



In **Bulgaria** these spirits were called **ALA or ALE**. "*She looks like a black wind, a giant of an indistinct form, a snake-like monster, a huge mouthed monster, a raven, a human-like monster*".

She is seen as the **dragon's sister** and not much "different from him". "*She is invisible but very much heard, her powerful hissing resonating in dark, haily clouds, as the **Hala**-cloud overshadowing a village the people peered into the sky to see the great **imperial eagle** – the mighty bird with a cross on its back to banish her away.*"

"Hala" stems from the Greek word for "Hail".

Ala is the Turkish word for **snake**, the black Baba personification of dark storms.

Ala drove people **insane**.

Ala is addressed as:

- Ale,
- Smiljana,
- Kalina and
- Magdalena – a form of Magdalene about whom the Da Vinci code referred to as the wife of Jesus.

This spirit is said to be able to "sneak" into humans and then "she" has human form but retains Ala's properties and character. These people were recognized by their gluttony because Ala, in order to satisfy her hunger, drove them to eat incessantly.

Ala is the great earth mother of the Ibo people of Nigeria, the divine mother who gives life and as the crone claims children in death.

Allah – the great god of Islam is referred to as the “divine feminine” – her guardians at the Kaaba, the hereditary sons of the “old woman”, the Beni Shaybah are its guardian.



Could the power of the **dark mother, the Kali/ Cailleach**, who in the Celtic world is called **Bridget or the BRIDE**, be the **indwelling dragon force** that gives the power to the image of

the beast through the **creative energy of the Kundalini serpent?**



Ala, die Göttin des Wachstums.

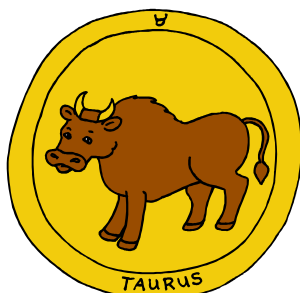
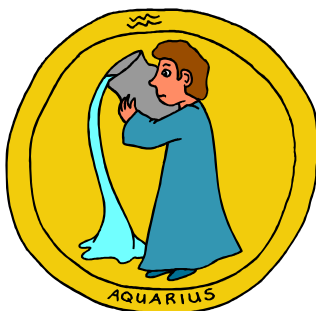
In Yoga there are **three channels**:

- *IDA - Female*
- *PINGALA - Male*
- *SUSHUMNA - Central*

There are **7 chakras** along these channels which would appear to correspond to the **major planets**:

- Saturn
- Jupiter
- mercury
- Venus
- Mars
- Sun
- Moon

There are **FOUR main Constellations**:



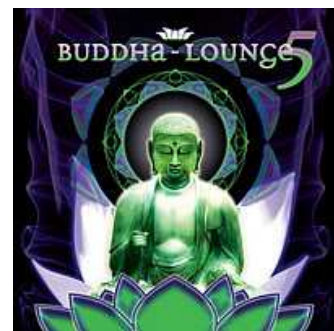
In Yogic understanding these chakras and **nadi** are the **micro-cosmical image (internal chakras and nadis in man)** of the *macro-cosmical* Earth (**earth charkas and leylines**) but also of the **universe** (the planets and zodiac systems.) In one account they are called the chakras of the '**inner Zodiacal systems.**'

CHAKRAS are called '**windows of the soul**'. They are inner '**portals**' to the spirit world through which energy/ light can flow.

However, these windows can be bolted, barred, locked, cover with shutters or blinds to keep the light out.

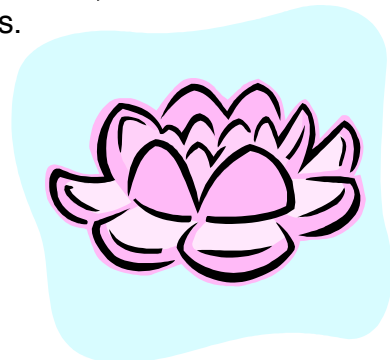
In the book the "**Art of Spiritual Healing**" by Keith Sherwood, he describes a chakra as "a **funnel**, with a larger end on the surface of the etheric (spirit) body.

As this energy whirls into the small end of the funnel, sometimes blockages can occur, which results in something much like what happens when blood circulation cannot reach and organ or extremity, Depending on the severity of these blockages the body develops emotional and even physical 'dis-ease.'



These blockages are also called '**knots**' or '**stress points.**' **These windows cannot be seen, for they are spiritual windows, doors or gates which can be blocked with emotions, memories, pain, etc.,** but also can be unblocked, cleared and cleansed with repentance and the Blood of True Jesus.

The word **chakra** in Sanskrit means: '**wheel**' or '**spinning wheels or rotating wheels**'. They are described as **cone-shaped wheels of spinning energy**' also called '**discs**' or '**plates of light.**' In Russia the Baba/ Kali lives in a spinning hut" on chicken legs. Lilith is depicted with chicken or bird's feet.



These are also called '**flowers**' or '**padma.**' or **Lotus.** In the Bible it speaks of the flowering of the priesthood. The Yogic flowers are false flowers, but there is a true flowering of the Godly priesthood.

The Jewish priests also wore a **golden flower** or plate on their **turban** above the forehead called a '**sis**' which maybe symbolic of the **thousand petalled lotus** of the **crown chakra** (the '**sis**' is so close to the name **Isis** the name of the goddess). This is the true flowering of the priesthood on which "Holy unto the Lord" is written – the Seal of Consecration, Rev. 14:1

Rev. 14:1 “1 THEN I looked, and behold, the Lamb stood on Mount Zion, and with Him 144,000 [men] who had His name and His Father’s name inscribed on their foreheads.”

The Counterfeit – false holiness.

Each chakra has **spokes - the wheel, or petals- the flower.**

Each **petal** associated with one of the letters of the **Sanskrit alphabet.**

Each chakra has its own:

- colour,
- symbol,
- vibration,
- musical note,
- mantric sound,
- mantra, deities and
- connection to the elements and
- to the Zodiac.



Each chakra has a **different coloured light** which approximate the colours of the **rainbow** and are in fact called ‘**the rainbow of lights within.**’

The **Ida** and **Pingala** ascend and descend according to the chakras ‘spin’. They are described as **stations** or **centers** of pure consciousness called ‘**chaityana**’, which form focal points of meditation, the hidden meeting points of the **nadis** or channels of the ‘subtil’, body according to Hindu physiology.



These energy-centered chakras are strung along the **Sushumna** – the central channel - and through them the Kundalini energy can be made to ascend either activating or dissolving (depending on which Yogic tradition) each chakra in turn, until it reaches the **crown chakra**.

At the **centre** of each chakra there is a stem-like channel that extends to the spine and merges with it. These chakras are connected to the **Sushumna** via these stems which provide each chakra with **vital energy**.

The **7 primary chakras** can be classified into **3 main groups**:

LOWER: – the root, sacral or spleen chakras.



MIDDLE: – Solar plexus, heart and throat chakras.

HIGHER: – the 6th and 7th crown (third eye) chakras.

There are also chakras in the **hands**, **the feet** and **genitals**. There are also additional chakras along the spine which are sometimes referred to.

In **Tibetan Tantra** there are **5 chakras** called **KHORLOS** located in the:

- perineum,
- navel,
- heart,
- throat and
- brain,

which correspond to

- the elements: earth, water, fire, air and ether;
- to the five cardinal points and
- the centre or summit;
- to the 5 families of the Dyani- Buddhas ;
- to the 5 seed sounds ;
- and to the 5 sections of the stupa or chorten.(this is the equivalent of the Babylonian Ziggurat.).



GOD’S WORD ON THE NUMBER SEVEN – COVENANT

In the Old Testament times while performing a covenant ceremony, they would offer during the ceremony 7 sacrifices and/or swear allegiance 7 times.

For example: In a marriage ceremony the oaths were repeated 7 times. The bride walks 7 times around her husband.

When you **swear** an **oath** in a **covenant ceremony**, the **word for swear or oath is the word derived from the number seven** which literally means “**TO SEVEN YOURSELF**”.

Many times in the Word, God tells His people: *“Divorce Baal and break all covenantal allegiance with this spirit and SEVEN yourselves to Me. Come back into marriage covenant with Me and I will be your Provider, I will be your covering, I will be your Protector.”*

The Seven Spirits of the Lord

Isaiah 11:2 “2 And the **Spirit of the Lord** shall rest upon Him—the **Spirit of wisdom and understanding, the Spirit of counsel and might, the Spirit of knowledge and of the reverential and obedient fear of the Lord—**“

- The Spirit of the Lord
- The Spirit of Wisdom
- The Spirit of Understanding
- The Spirit of Counsel
- The Spirit of Might
- The Spirit of Knowledge
- The spirit of the fear of the Lord

The Seven Seals of the Book of Revelation is only to be opened by the Lamb.

Revelation 5: 5, 9 “5 Then one of the elders [of the heavenly Sanhedrin] said to me, Stop weeping! **See, the Lion of the tribe of Judah, the Root (Source) of David, has won (has overcome and conquered)! He can open the scroll and break its seven seals!**

6 And there between the throne and the four living creatures (beings) and among the elders [of the heavenly Sanhedrin] I saw a Lamb standing, as though it had been slain, with seven horns and with seven eyes, which are the seven Spirits of God [the sevenfold Holy Spirit] Who have been sent [on duty far and wide] into all the earth.

9 And [now] they sing a new song, saying, You are worthy to take the scroll and to **break the seals that are on it, for You were slain (sacrificed), and with Your blood You purchased men unto God from every tribe and language and people and nation.**”

Satan is a copy-cat and gets man to make covenant with him.

The Seven Seals of the Seven Chakras

There are **seven seals of the seven chakras. Seven seals of fire.**

Kundalini followers declare these seals have locked people up and stopped their knowledge and power to keep people enslaved and ignorant.

So Lucifer comes to open the seals that are not to be opened and releases people into total destruction.

The opening of the seals can be used in black magic to kill. Fire is released into the seven chakras-wheels, the sun recognized by occultists as the source of all energy in the galaxy.

The New Age Rainbow

The covenant sign of God to Noah is made up of seven colours:



- red
- orange
- yellow
- green
- blue
- indigo
- purple

The seven colours of the Chakras make up the rainbow of the false covenant with Satan himself.

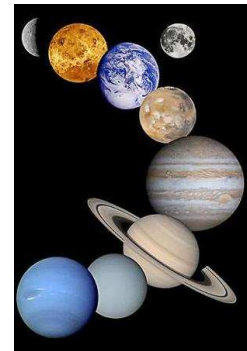
Visualisation

The visualisation of the colours of each Chakra, and spinning the wheel, is done up the spine by Kundalini practitioners.

This meditation of opening the wheels opens the eyes of the person.



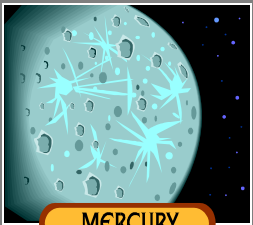
Gen. 3:3-5 “3 Except the fruit from the tree which is in the middle of the garden. God has said, You shall not eat of it, neither shall you touch it, lest you die.
 4 But the serpent said to the woman, You shall not surely die,
 5 For God knows that in the day you eat of it **your eyes will be opened, and you will be like God, knowing the difference between good and evil and blessing and calamity.**”









There are Seven planets:

Mercury, moon, venus, sun, Jupiter, mars, Saturn. Each planet is also involved in the kundalini power with the moon and star worship.

The Seven Planets:

PLANET	METAL	ANGEL	CHAKRA	LOCATION ON BODY
 MERCURY	Mercury	Raphael	Sahasrara	Pineal gland

 EARTH'S MOON	Silver	Galnel	Ajna	Pituitary gland
 VENUS	Copper	Ahael	Vishuddha	Pharyngeal ⁴
 THE SUN	Gold	Michael	Anahata	Cardiac Plexus
 JUPITER	Tin	Tzadkiel	Manipura	Solar plexus
 MARS	Iron	Kamael	Swadhishtana	Prostate Vagina
 SATURN	Lead	Tsspkiel	Muladhara	Sacral Plexus

⁴ **Pharynx** (Science: anatomy) It sucks in dirt. The cavity at the back of the mouth. It is cone shaped and has an average length of 76 mm and is lined with mucous membrane. The **pharynx** opens into the esophagus at the lower end. The passage to the stomach and lungs; in the front part of the neck below the chin and above the collarbone. opens either the larynx or the esophagus canal.

There are seven zodiacs and seven metals are worshipped in the chakras.
In Yoga these Chakras are (based on the Hindu system):

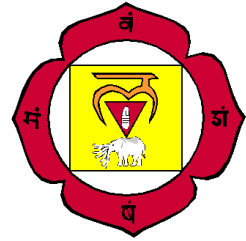
1. **MULUDHARA, ROOT, BASIC, SEED or ROOT**



support chakra: at the base of the spine. It has 4 petals or spokes. It is connected to the element **earth**.

The coccyx bone, sacrum bone – the sacred bone of witchcraft.

This is the alpha of Lucifer and affects the legs, arms, feet, rectum, bones and immune system.



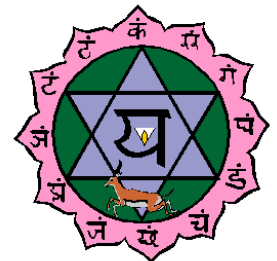
2. **SVADISHTHANA/SWADHISHTHANA, SACRAL, PELVIC, GENITAL** or 'own abode' charka at the root of the genitals. It has 6 petals or spokes. It is connected to the element **water**. The spleen chakra, it affects the sexual organs, colon, urinary tract, small intestine, pelvis, lower back, immune system, body fluids and lymphatic drainage.



3. **MANIPURA/MANIPURAKA:** or 'fullness of jewels' chakra at the level of the navel. It has 10 petals or spokes. It is connected to the element **fire**. The solar pelvis chakra – affects the adrenal glands, stomach, muscles, liver, spleen, gall bladder, pancreas, metabolism, digestive tract, lumber vertebrae, lungs.



4. **ANAHAT,** heart or 'unstuck melody' charka at the heart centre. It has 12 petals or spokes. There is also the **HRIT** heart chakra which has 8 petals or spokes. It is connected to the element **air**. At this level the person becomes an occult mind reader and enters the spirit world not of God.



The petals are called the energy of love, loyalty, sincerity and forgiveness. It affects the heart, thymus gland, immune system, chest, skin, blood, circulatory system, endocrine system.

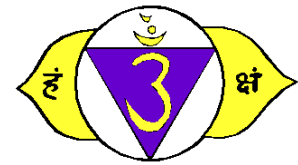
5. **VISUDDHA,** throat or 'complete purity' chakra. It has 16 petals or spokes. It is connected to the element **ether** or **space**. The meaning of Visuddha is "purification". It affects the throat, vocal cords, neck, bronchial tubes, communication, thyroid and parathyroid glands – false oracles, false prophetic, false mouthpiece, dignity, pride, honesty of Hinduism.



6. The **TALU/LALANA** chakra is in the roof of the mouth and has 12 or 64 petals or spokes.

7. **AJNA/SAVIKALPA/SAMADHI** chakra or ‘*gurus command*’ at the brow.

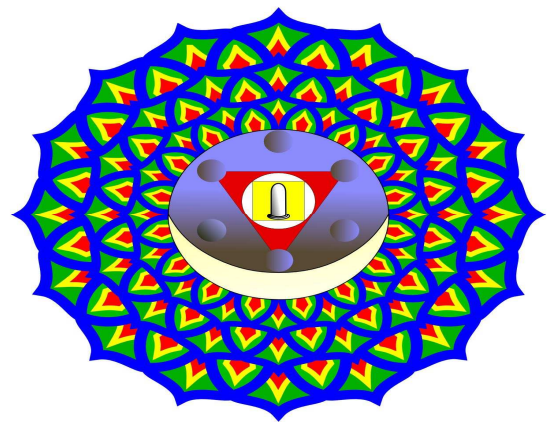
The door is open for clairvoyance and the gateway to mental and physical power, the psychic realms and false power to move in the spirit, the past is nullified and the person has no need to repent.



It has 96 petals or spokes. It connects to the **spirit**. This is also called **INDU** chakra. It had 16 petals or spokes and connects to the **mind**. It affects the pituitary gland, eyes, ears, nose, sinuses, and spinal cord. There is a pyramid of muscles fiber on the bridge of the nose – it is called the protection of the power to the brain – releasing the golden light of wisdom.

8. **SAHASRARA- PADMA/ NIRVAKELPA/SAMADHI, NIRVANA** or ‘thousand petalled or spoked’ chakra.

This chakra is the omega of satan – the communion with the shiva god at the crown. Shiva the destroyer, the light and power are released through the fontanel bones – “the little fountain”. Kundalini now “cures you” and you come to self realization and the giving birth to the re-born dead man who is changed to meet the rising sun – Lucifer. The person can then experience astral travel into the seven heavens and seven planets.



It is placed on or above the head. It is technically not a chakra at all but a summation of all the chakras.

The crown chakra, the crown of Lucifer, the crown of death, the gateway to higher consciousness.



It affects the cerebral cortex, brain, skull, central nervous system, pineal gland, - affects hormones and melatonin for sleep.

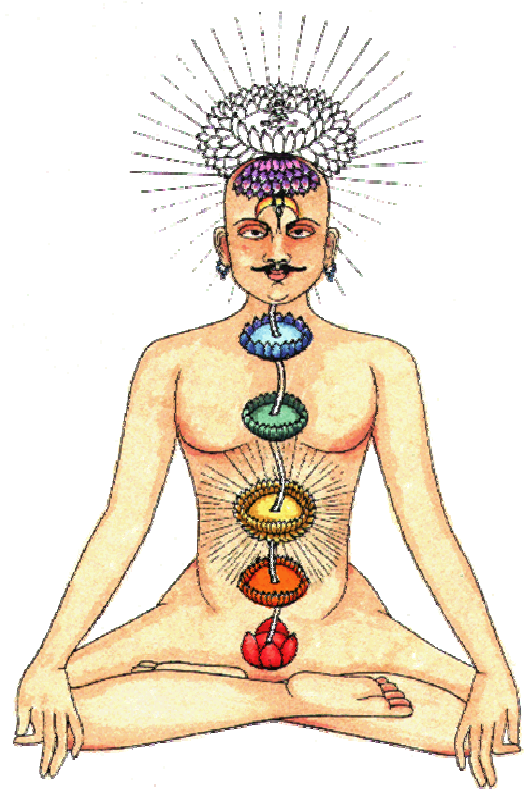
There is also a chakra called **GURU** which sits in this place. It has 12 petals or spokes. The crown chakra is associated with the **Pineal Gland and the Pituitary Gland** which forms a psychic link with the 6th and 7th chakras called the **ANTAHKARANA** psychic bridge.

In the **Tibetan** system *the top two chakras are united as one as are the bottom two chakras.*

The elements are thus distributed differently:

- **MULADHARA & SVADISHTHANA** – earth
- **MANIPURA** – water.
- **ANAHATA** – fire
- **VISUDDHA** – air
- **AJNA & SAHASRARA** the top two – Ether, space.

1. MULUDHARA / MALAHARA OR FIRST ROOT, BASE, GROUNDING OR SEED CHAKRA: the chakra of the **earth**, called the *Dragon's tail* or *Ketu*.



This first chakra rules the **physical energies**.

The sense of **smell** is related to this chakra.

Smell our most primitive sense and it is the first sense that awakens upon our physical birth.

The receptors for smell are found at the base of our brains and feeds directly into our **Limbic system**, which is the area of **memory** and **emotion**. Therefore **aromas** can immediately access emotional memories stored in our subconscious.

It is associated with the astrological sign **Taurus** whose symbol is the **bull**.

Like the root chakra, this is the symbol of **masculine power** and **fertility**.

The strongest bull preserves the genetic integrity of the herd.



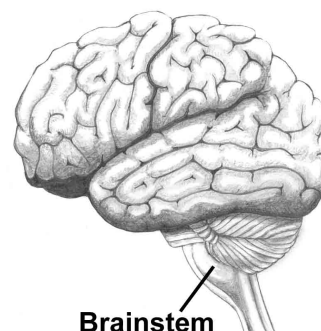
This chakra is the basis of **both male and female energy** or **soul power**.

It represents the **masculine will and male sex organs** as well as the **feminine energy** of the *goddess Kundalini* (**bisexual**)

This is the '**seat of the goddess Kundalini - Shakti, KULA KUNALINI**' the latent conscious energy, the *microcosm* of the *cosmic creative Shakti*.

This is where a man can integrate their feminine power and women their masculine power through the opening of this chakra; it also connects us to 'mother earth' as well as to the element earth and to crystals (new age healing).

This chakra represents the 'reptilian' portion of the brain, which is the **brainstem**, the centre for life support. The brainstem and the area above it are called the 'reptilian' brain, because it is possessed by all creatures from reptiles to humans.



For reptiles this is their entire brain, but for humans it is **the base or stem of the brain**. In fact, part of this area is known as **the brain stem** (the area scarred in mind control.)

Each chakra feeds 'prana' breath (spirit), into different **endocrine glands**. Just as there are **7 chakras** so there are **7 endocrine glands**. Both the chakras and the endocrine glands are located along the spinal column.

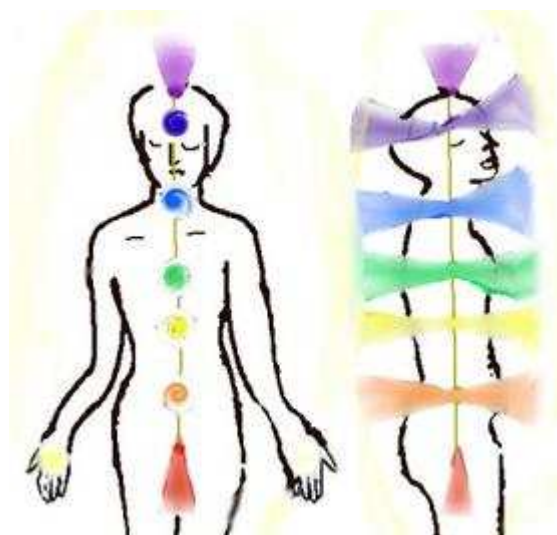
The endocrine glands manufacture **hormones** and supply them to the blood stream, where they are carried to every organ and tissue to exert influence on the functions of the physical body.

The endocrine gland for the first chakra is the **Adrenal glands** – two glands located one on top of each of the **two kidneys**.

The **Adrenal glands** are the body's call to **battle**. They release **Adrenaline** and activate the 'fight or flight' syndrome.

This Chakra is located near the **SACRAL PLEXUS**, the 'nerve centre' which rules:

- the skeleton,
- legs,
- feet,
- eliminatory system,
- reproductive organs and
- the prostate,
- the masculine side of the body and
- the feminine side.



Anthropologically the first chakra connects us to the time when man was a **cave dweller** (the reason there is so much activation being released from cave art.)

This is the **home** of the '**sleeping Serpent**,' origin of the '**sleeping beauty**' counterfeit of the True Bride, called the goddess Kundalini.

When this chakra is 'clear' the goddess Kundalini can awaken and begin her rise towards reunion with lord **Shiva**.

Each chakra in the human body connect to a chakra in 'Mother Earth'.

As the goddess **LADY GAIA**, (one of her many names) she connects to the **MOTHER EARTH'S FIRST CHAKRA or Cardinal chakra** which is **at Mount SINAI**, or in some reports **MT. SHASTA** - where the body of **Mother earth**, allows her Kundalini to rise to meet her divine mate.

2. **SWADHISTHANA/SVADISTHANA CHAKRA**: the chakra of the moon.



This is the chakra called 'self or own abode.'

It is the **navel** or **pelvic** chakra.

The navel was once our **umbilical cord**, the attachment to our first physical home the womb of our mother, and the place of nurturing.

It represents our attachment to '**Mother Earth**'

It has 6 petals or spokes.

In **numerology** 6 represents family, balance and harmony

(6 = 6x6 x6= 666 is the number of the beast/Isis.

The triple goddess - the unholy trinity.)

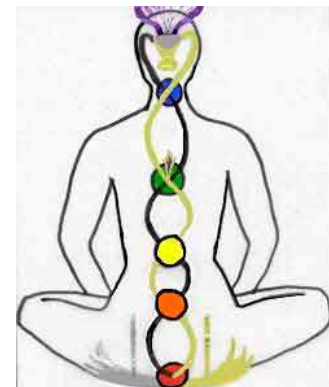
It is associated with the colour white or Orange according to which yogi's tradition, orange the colour of emotion.

In Hindu culture this is the colour of death and of the old (Hari-Krishna robes?). This refers not only to physical death but also to the death or total liberation.

The **musical note** or mantra for this chakra is **D** and the **mantra** '**vam**' or '**o**'.

This chakra governs

- sexuality,
- reproduction,
- emotions,
- instinct,
- food,



It rules the feminine component of sexuality where as the root charka rules the masculine component of sexuality.

This is the chakra that governs **creativity**, the ‘use of our hands’ –sculpting etc.

This is the ‘**Hara centre**’ of **dance** and **martial arts**. (**Belly dancing** – harem.)

This chakra governs the fight for survival, the ‘*gut instinct*.’

The first root chakra governs the *fight* for survival whereas this chakra rules the *instincts* for survival.

The root chakra rules money and the power that it holds

This chakra rules money also but the security that it brings.

This chakra governs ‘taste’ and connects to food, style, fashion etc.

It is connected to the astrological sign of **Cancer** which rules **emotions**, **receptiveness** and **fertility**.

It is linked to the element **water**; *our first home in the physical was the waters of the amniotic sac*.

It rules the **kidneys**, which is where we eliminate water.

This chakra depicts our ‘animal instincts, tribal consciousness, the *mammalian* portion of our brain where the **Limbic system** rules our emotions and short-term memory.

The Limbic system is an important centre for creativity and learning because it is where emotions and memory combine.

Emotions teach us to remember through good and bad experiences, and the food connection is the means of reinforcement through the process of reward or pain.

This chakra connects us to the time when civilization advanced beyond caves and was able to settle into tribes (tribal and national identity.)

The **Endocrine glands** for the **second chakra** are the **Gonads** which consist of **both male and female sex organs**.

These include the *Testes, ovaries, and prostate gland*.

The latter is also ruled by the root chakra, the interaction between testosterone and adrenaline activated, when a man’s fight or flight syndrome is activated.

It is connected to the *lumbar plexus and the lumbar region of the back* (back pain).



This chakra connects to the **SECOND CHAKRA OF MOTHER EARTH** in the **Brazilian Amazon**, or **Lake Titicaca** the paradise of fertility and growth.

This chakra symbolizes our emotions - good and bad.

The backlog of negative emotions acts like a wastepaper basket and one more piece of paper is enough to cause the contents to spill over.

This is our **unconscious** and we need to empty the wastepaper basket to clear the chakra.

The deities within the **Swadhisthana** chakra are:

- **VARUNA** seated on a crocodile- water monster.
- **VISHNU** and
- **RAKINI**.

This is the element corresponding to the element **water** and is traditionally associated with **sexual impulses and sexual energy**.

Indian teachings place a lot of emphasis on **celibacy**, *in order to raise and transmute this powerful sexual energy to the brain* or more correctly to the 'Upper TIEN TIEN' to use the **Taoist paradigm**.

This is the basic principal behind celibacy in all religions including Catholicism.

In practice, I quote from the article:

"However, this noble ideal flounders because the individual is not ready to renounce physical sex, and may become psychologically unbalanced, full of guilt or turn to pedophilia or some other form of unnatural sex." End of quote.



3. **MANIPURA/ MANIPURAKA CHAKRA:** the **solar plexus chakra**. The chakra of the **sun**.

The **third chakra** located between the Sternum bone and the navel. This chakra in **Indian Tantra** is called the '**place of gems**'

It is described as having 10 petals or spokes.

The number 10 in numerology is reduced to the number 1. One symbolizes the beginning "as *in the beginning was the Word.*"

Every word begins with the thought. So it is the *unconscious* thought that proceeds through communication. It also represents the **communication with the astral world**.

It is associated with the colours *red, black, dark green or dark blue*, but also to *gold, yellow* which represents **intellectual thinking**. Yellow, between the red of 'stop' and the green of 'go' on the chakras.

Its symbol is a **red triangle**.

The **musical note** for this chakra is **D** and the **mantra** '*ram.*'

It corresponds to the element **fire** – sun, solar fire.

This is the 'navel' or **Solar Plexus chakra** hence the alternative name **Nabhi**. It also rules **electricity** and *the firing of our nervous system* that allows our **Cortex** to choose our behaviour, our 'will power.'

The area of the brain associated with this chakra is the *Neo- Cortex* which is the beginning of higher mental functioning.

The third chakra rules the **mental portion** of the brain of our consciousness and governs thinking, psychic, intellectual and the power/freedom that is gained by our minds.

This is the '**power chakra**' for it governs our **sense of self**; - the power that we have within to govern our **destinies**.

If a person is too **YING, female** energy, they may feel **powerless**, too **YANG, male** energy they may tend to be too **aggressive** or **greedy**.

This chakra related to the **Liver, Gall bladder, stomach, spleen and pancreas**, it regulates how centered we feel and our mental faculties to stay motivated. It maintains our sense of self.



This is known as the gateway into the astral plane of the fourth dimension.

It rules our **cognitive emotions, and reactions to others.**

It is a combination of our thoughts and emotions that opens our gateway to the fourth dimension.

Once opened, this **portal** can begin to blend our third dimensional perceptions, with the higher psychic and intuitive consciousness.

This chakra rules our **sense of sight, the physical sight and second sight of astral vision.**

This chakra connects us to the civilizations of about 5,000 years ago, the great empires of *Egypt, Syria, Greece, and Rome* and their 'power over their opponents.'

It also connects us to their **multiple gods and goddesses** as well as the *animals* that they worshipped.

The **Endocrine gland** connected to this chakra is the **Pancreas.**

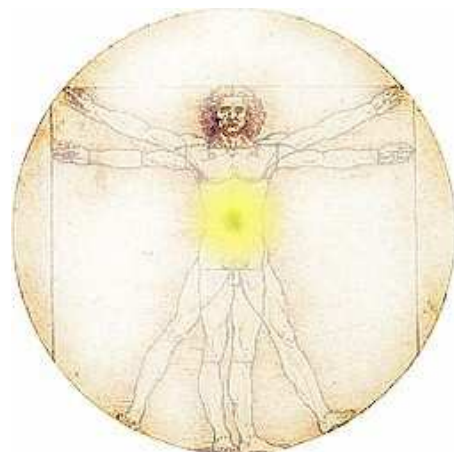
The pancreas plays an important part in the **digestion of food.**

It secretes the hormone **insulin**, which regulated the **blood-sugar** levels and our **metabolism** for **digesting carbohydrates.**

The endocrine gland is thrown off balance, when too much sugar is taken into the system. Alcoholic beverages instantly convert to sugar and diabetes can occur from alcoholism.

This chakra connects to the **solar plexus**, beneath the ribcage, and is associated with **the lower back, abdomen, digestive system, stomach, liver, spleen, gall bladder, and automatic nervous system.**

This chakra connects us to the **THE CHAKRA OF MOTHER EARTH** chakra in **Mount Kilimanjaro, Kenya, Africa** (one of the largest free-standing mountains in the world) or to **Uluru- Katatjuta, Australia.** It reminds us of the 'power within.'



When this chakra is unclear we feel powerless and it can reproduce, anger, greed, doubt, and guilt.

Its ruling deities are:

- **VAHNI,**
- **RUDRA,**

- **LAKINI.**

This chakra has centers in the **front (navel) and rear (kidneys)**

There is also a centre called the **TAN TIEN** described as being one and a half inches below the navel called the **SEA OF CHI** centre and is linked to the *molten core* of the earth, the fire red, central part of the **Tantric Manipura** chakra.

Chi is the Chinese Kundalini, the name CHI +na = China echoes this power.

Astrologically the planet or celestial sphere that connects with the **Manipura** is **VENUS**. This connects *Venus/ lucifer* to the **womb**.



4. ANAHAT CHAKRA – THE HEART CHAKRA : chakra of the **four winds**.

In Tantra this is called '*unstruck cord*' and its location is in our **hearts**.

It is said to have 12 petals or spokes of red or white, while the central part is a smokey hue.

The number 12 in numerology reduces to the number 3.



Three is the number which represents the relationship between **wisdom**, **power** and **love**.

Wisdom without love and power would be weak and cruel.

Power without wisdom and love would be dangerous and foolish.

Three is also the number of the trinity for good and bad. It is associated with the colours deep red, shining red, shining vermillion, yellow, dark blue, white, but also green and pink for the '*high heart*', green representing growth and health. Its **symbol** is the **blue hexagram**.



The **heart** is the hub of our bodies, the **centre** of our '**wheel**' (connects to the wheel of life'.) This is the point where our masculine and feminine energies meet.

This is the seat of the '**Divine Soul**' or '**higher Self**' the **JIVATMAN** represented by an image of a *motionless golden lamp flame*.

This chakra connect to the Astrological sign **Libra** the '**scales**' the sign of **relationships** and of **Venus** (*Lucifer*)



The heart chakra rules our sense of touch.

Touch is the first intimacy that we know as infants, and remains our most powerful means of communication throughout our lives.

Touch can be the most loving or the most fearful.

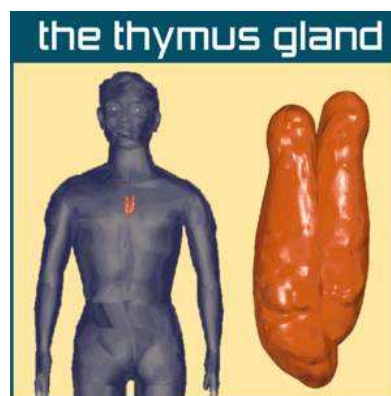
In our hearts we learn about touch and how we in turn wish to touch others to trust or to fear.

This chakra is ruled by the element **air** and rules our **Lungs**, which bring in air – **oxygen** – into our physical bodies.

The relationship between **heart** and **lungs** is vital, without the fresh oxygen that our lungs drive into our hearts; our red blood cells could not carry the vital life-force (blood) throughout our bodies.

The heart chakra rules our **consciousness**, 'human love' and from our 'higher heart' we give unconditional love which is *free of judgment*. From this place we can heal the harm that others have done to us, and we can heal others.

The **Endocrine gland** for this chakra is the **Thymus gland** which is the core of our **immune system** and vital for healing. Often it is said 'love heals' – both the psychological and physiological centers of healing are in the heart.



The heart is the symbol of life, the Hindu **ATMA**, which is known as the 'three fold flame of life' activated at birth and extinguished at our death.

It connects to the **Cardiac plexus**, which is the neurological hub for the heart, **lungs and blood circulatory system**.

Without blood and oxygen we cannot live. It rules the **Beta-wave** consciousness and **Alpha wave** consciousness which is the **bridge** to higher dimensions and the areas of our brain in the **higher Cortex**.

Love allows us to climb the stairs of **objectivity** and from a perspective of objectivity we can be free of the desires and passions of everyday life.

This chakra connects to the **CHAKRA OF MOTHER EARTH in HALEKALA, MAUI** (this links it right back to the goddess kali – **Kala**, the goddess Kundalini) or to **Glastonbury – Shaftesbury, England**.

The Deities within this chakra are:

- **VAYU,**
- **ISHA,**
- **KAKINI.**



The presiding power is **KAKINI**

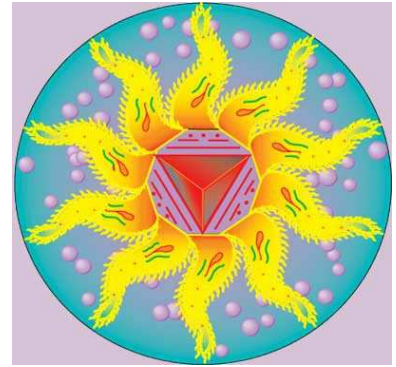
5. VISHUDDHA CHAKRA : this chakra is in the **throat**.

Chakra of **time** (Kala/ **Kali means time**) and **space**

In **Shakta** Tantra the **Vishuddha** chakra has 16 smoke coloured petals or spokes, each linked with a Sanskrit vowel.

In numerology 16 reduces to 7.

Seven, the number of **analysis, understanding, knowledge, awareness** and **meditating**.



It is the '**inner focus**' that is vital for **creativity to germinate**.

The Central chakra region is white, transparent, smoke or sky-blue. It is associated with the element **space** (*akasha*) through which are transmitted the subtle vibrations of **Mantras** (*Laya Yoga*).

The **musical note** is **G** and the mantra '**ham**' or '**u**'.

The letter G is in the middle of the apron of **Freemasons**.

The 'air' on a G-string,

Also the name for the **female underwear**.

This chakra rules the **throat, the vocal chords, speech, hearing, communication, self-expression, grace, singing** and **listening to the higher self**.

This chakra urges us to find ourselves, to communicate it through **creativity** and to use the **creative force of our higher emotions** to move our consciousness to higher dimensions.

It also rules our sense of **hearing**, just as we learn to hear our inner voice but to hear others also.

The **astrological sign** it is connected to is **Gemini** and it's ruler **Mercury**, which focuses on communication (*Mercury is Hermes of the Caduceus*).

The **element** it connects to is **ether**, which calls for this force to focus on the angelic realm, to a place where our individual consciousness has progressed beyond personal and group to '**national consciousness**.'

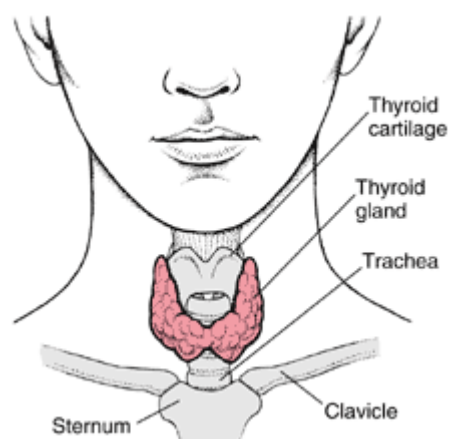


This is the chakra that connects us to the NEW AGE – our present time, beyond the one male god with human characteristics to the *god/ goddess* that is in all of us.

The **Endocrine gland** associated with this chakra is the **Thyroid gland**, the butterfly shaped gland which wraps around the front part of the **wind pipe** just below the 'Adam's apple.'

It produces **hormones** which influence essentially every organ and tissue and cell.

Thyroid regulates the body's **metabolism, organ function, affects the heart rate, cholesterol levels, body weight, energy levels, muscle strength, skin condition, menstrual regularity, memory and many other conditions.**



The Thyroid communicates with our entire body and has much to do with regulating our overall health.

The **nerve plexus** for this chakra is the **Laryngal plexus**, which controls our **throat, shoulders, arms and voice.**

This chakra connects to the **MOTHER EARTH'S CHAKRA** in Mount **Shasta, California.**

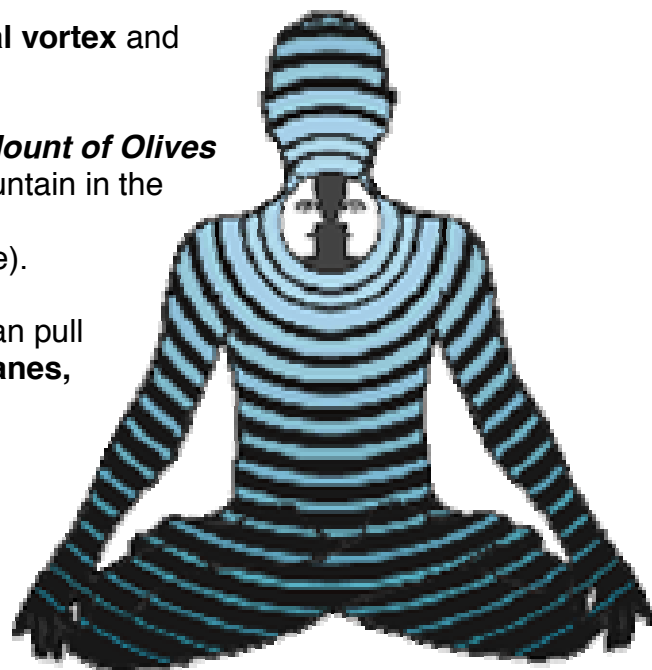
Mt. Shasta has long been known as a **spiritual vortex** and many retreats and seminars are held there.

The "**Lemurians**" are said to live under **the Mount of Olives or under Mt. Shasta** which is the **highest** mountain in the United States and is a pinnacle of inspiration. (Shasta daisies - daisy programming - Mengele).

This is the chakra that our tortured emotions can pull us into - the **nightmare of the lower astral planes, the tunnel to the 'dark side'** that lies in the **netherworld, the world of illusions.**

This is the chakra where we acknowledge that we are all gods and goddesses in training, like small seeds dropping from a flower (chakras) - we come into dimensions that **we must learn to flower** and where we find many **hardships**, for often *the soil is infertile and dry.*

It is the place of facing our **inner facts and outer conflicts** to grow into our higher creative selves.



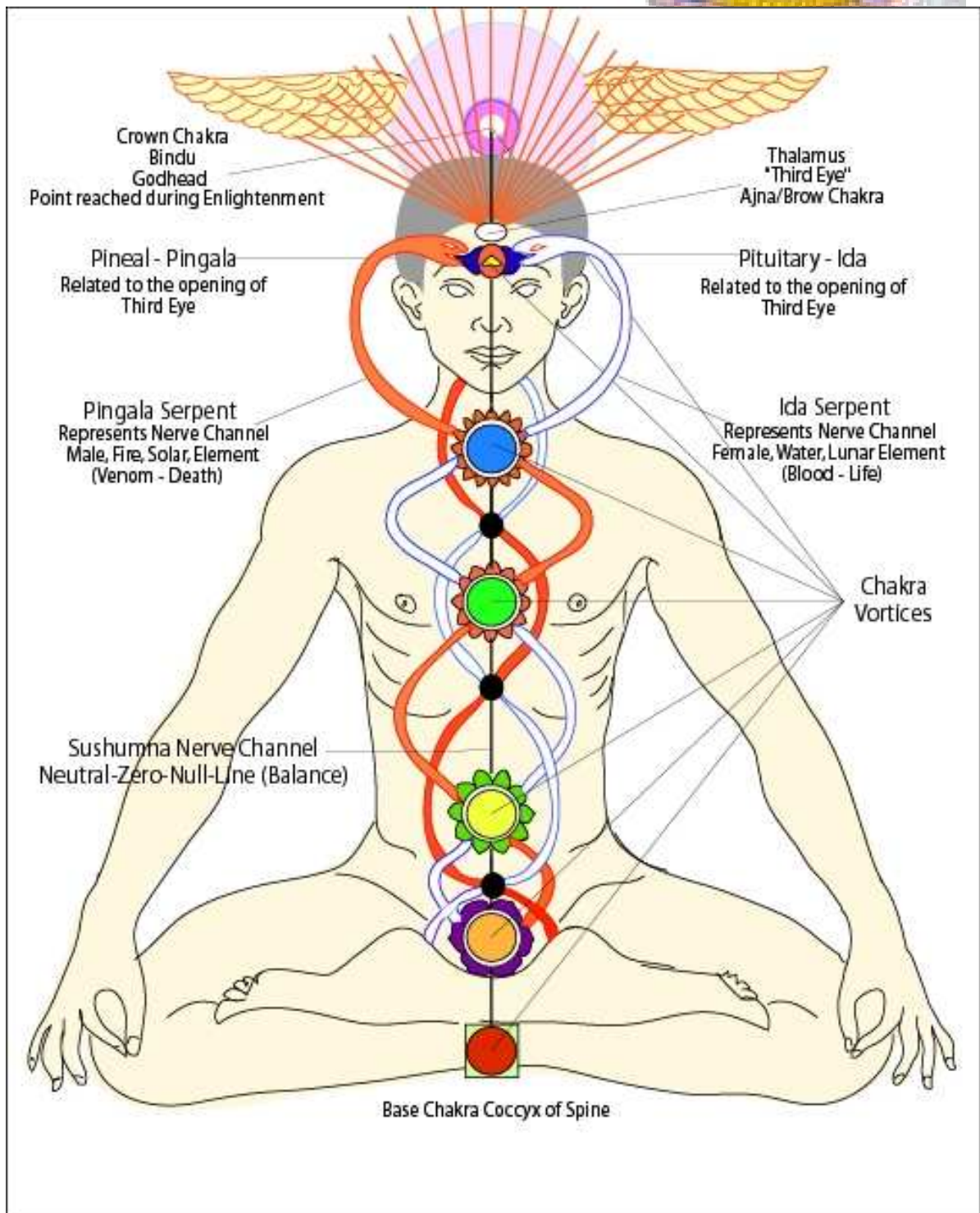
The **throat** holds the power of expression which is our birthright, the place where our **personal creativity is not limited to a social 'art form'** but connects us to the **creative force which is our birthright.**



The deities within this chakra are:

- **AMBARA,**
- **SADASHIVA,**
- **SHAKINI.**

The presiding power is **SHAKINI.**



6. ANJA, AVIKALPA, SAMADI, BROW OR THIRD EYE CHAKRA :

The word **ANJA** means "command" - in the sense of the 'Guru's command' or spiritual guidance. **Guru is a name for Satan.**

The **Tantric Brow chakra** has 2 petals or spokes the **ITARA –LINGA** (linga means the **male phallus**)

It is associated with the '**manas**' or 'mind.'

It is said to be white, lightning like in colour and connected to the colour purple. Its symbol is the **white triangle**.

Identified with the *eyes, and the **third eye**, the 'eye of psychic vision,'* and to the **PRANAVA or AUM.**



THE PITUITARY GLAND AND THE PINEAL GLAND

According to Indian Yogis, *the **Pituitary gland** of the 6th chakra and the **Pineal gland** of the 7th chakra must join their 'essence' in order to open the **third eye**.*

The **pituitary gland** about the size of a pea is located behind the **centre of the forehead, between the eyes.**



Therefore this chakra is called the '**brow chakra**'.

The **pituitary gland** (pituitary means **phlegm**) is known as the '**master gland**' because it acts as the **main controller** that sends messages to all the other glands from **its two lobes, the posterior and the anterior.**

The **pituitary gland** prompts the proper growth of glands, organs and sexual development.

The **pituitary gland** is known as the '**seat of the mind**' with the **Frontal lobe** regulating emotional thoughts such as **poetry**, and **music**, etc., and the **Anterior lobe**, regulating **concrete thought and intellectual concepts.**

The Pituitary / Pineal gland is known as the '**seat of illumination**', reason, intuition and cosmic consciousness.

The Pineal gland is a **cone-shaped gland in the middle of the brain** behind and just above the Pituitary and contains pigment similar to that found in the eyes and is connected to the **Optic Thalami.**

Hence, *it controls the action of light upon our body.*

It is located at the ***posterior end of the third ventricle of the brain and the pituitary in the roof of the third ventricle.***

It is said that the **essences of these two glands – the Pituitary and Pineal - are what opens the third eye.** The Pineal gland awakens adolescent sexuality.

It inhibits the immediate discharging of thoughts into action allowing us to look inward and deeply ponder our actions and reactions.

The third ventricle of the brain is a narrow opening lying near the base of the ***Cerebral Hemispheres*** and separating the two *thalamic areas*, these are the brain's 'storehouse' of all our sensory perceptions.

When the Pineal and Pituitary glands are fully developed and stimulated through meditation or prayer the third eye is open.

The **Third Eye** is called the '**eye of the soul**'. (The connection to ungodly 'soul power' and the 'soul gates of the chakras' which can be opened for psychic and occult powers.)

Shiva Yoga is a form of Yoga which specifically awakens the **Pineal gland**, which is dormant because our focus is usually on the sensate world, rather than on higher spheres.

Shiva Yoga teaches that cosmic light descends to meet the individual through the **Optic Thalami nerve connection of the Crown chakra.**

Once the Kundalini had risen to the **Pituitary gland**, it **merges** with the **cosmic light** which the Pineal receives in the third ventricle of the brain.

It is associated with the colours **white and golden.**

When the **feminine energy IDA** and the **masculine energy meet** the '**Mystical marriage**' initiates the birth of multi-dimensional consciousness, into the 5th dimension and beyond.

The rising Kundalini energy pulls the energy up from Mother Earth through the nerve channels into the Medulla Oblongata, through the Pons area of the brain and down into the Pituitary gland behind the eyes.

The increasing *Pituitary radiations* then pass through the third ventricle to **awaken the Pineal gland which has received light from the higher dimensions.**



The feminine energy *IDA* merges with the masculine *Pituitary gland* and the *female Pineal gland* receives the *masculine unmanifest energy from the spirit*. When the two awakened chakras essences meet in the third ventricle there is *union and harmony of spirit*.

The **Third Eye** is called:

- the 'middle eye of Shiva,
- the eye of Horus,
- the Horn of the Unicorn.'

The **Temple of Maat** in early **Egypt** was **dedicated to the opening of the Third eye**. (Maat was the goddess)

It acts as a sensitive *receiver and transmitter* but by which **vibrations** of many types can be *translated, interpreted and dispersed* into our three dimensional brains to gain wisdom, and illumination.

Through this Eye, **inner planes, thought forms, patterns and higher entities** are perceived. It is this point that Yogis focus on in meditation which develops the **Lens of the Third Eye**.

This process facilitates **Theta wave consciousness**. Theta waves develop as we drift off to **sleep**, where vivid imagery flashes before the eyes.

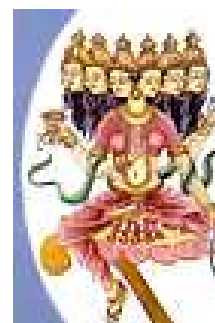
This is a time when we are extremely receptive to receive information sent from higher dimensions. Theta waves form gateways.

The deity is:

HAKINI SHAKTI –

- the goddess with 6 faces of red colour,
- clad in a red garment,
- and sitting on a white lotus (reminiscent of the whore of Babylon – Kali?).

The **Ajna chakra** connects to the chakra of **Mother Earth in KUH-E-MALEK SIAH in Afghanistan**.



7. SAHASRARA-PADMA/NIRVAKELPA/SAMADI CHAKRA - THE CROWN CHAKRA - THE CHAKRA OF ETERNITY:

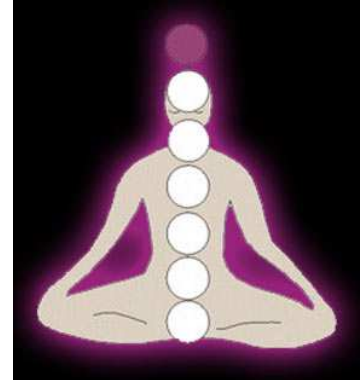
It is located at the crown of the head.

The location of the '**soft spot**' in an infant.

This in anatomy is called the **Fontanelles - 'little fountain'**. It is known as the *thousand petalled or spoked Lotus*.

Its symbol is the **white lotus or lily**.

It forms our own personal '**Star-gate**' or **vortex** into higher dimensions. It is a two-way chakra since it receives light from the cosmos.



The **musical note** for this chakra is **B** and the **mantra** is '**aum**' or '**ee**' as in **bee**.



The **colour** for this chakra is *violet /red*, red the lowest colour on our physical perception of the light spectrum, just above the *infra-red light*.

It is said to rule the **right eye**.

Conversely **violet** the highest perception on our physical perceptual light perception is just below ultra-violet and rules the crown chakra.

It is also associated with white pure illuminated light.

The Crown chakra rules the **Cerebellum**, the **top** of our head, **the entire brain, and nervous system**, but also to rule the **right eye**.

In **Egyptian** mythology the *opened Third eye* is called the **Eye of Horus**.

The physical **left eye rules the Moon and the feminine**, the manifest physical world.

The *physical right eye rules the masculine, Sun*, the unmanifest spiritual world.



Therefore the **right eye of Horus** brings the spirit into matter and then feeds that spirit into the **left eye of Horus**. In this manner the third eye remains open, grounded in the physical world and fully perceptive.

New Agers describe this as:” *The more we down-load higher dimensional powers into our physical bodies, the more essential it is to be grounded and centered.*

If we plug into a small fan, we do not need a third prong in the plug, however, if we are plugging into a powerful air conditioner we must have a third, grounding prong or we can burn out the electrical systems in our houses. It is the same with our ‘soul’s house’ – our physical vessels. “

We too must remain grounded in the Word of God and in Jesus Christ of Nazareth; otherwise we also might ‘burn out.’

The Crown chakra rules not only the *brain’s control of our entire nervous system*, but also our *higher self’s control*.

Once the crown chakra is opened we can become aware of the true brain (*the control mechanism*) that exists beyond the limitations of the third and fourth dimensions.

This chakra governs cosmic consciousness which is our connection to spiritual wisdom, aspirations, knowledge and the truth. This is the ‘*cosmic gate*’ of New Age.

Just as the **root chakra** connects us to the ‘**Divine Mother**’ (the tail); the **crown chakra** connects us to the ‘**Father**’ (the head)

The father and mother join together, spirit into matter, to produce the ‘**child of love.**’

[Is this why the Word says ‘*I am the head not the tail?*’]

The re-connecting through Jesus Christ from Nazareth back to our Father and not to the ‘Mother - the goddess.’

In New Age and the occult this *process is reversed* from the Father to the Mother – the goddess.

So to whatever source we are connected to, the Father or to the Mother will determine what direction we will go in.

This chakra connects to the **astrological signs** of **Capricorn** (*the goat*) and to **Pisces** (*the fish*) to the element of **cosmic energy**, which is often experienced as inner light, described as “*the energy which stems from the source and which feels like the ultimate intelligence and sense of knowing*”.

When the crown chakra opens, there is an experience of **isolation**, the **blackness of the great void, total darkness’ the nothingness** experienced by the New Age, the **Nirvana** of the **Hindus**.



This is the chakra of 'self-realization' of New Age - the place where they experience that they are 'gods.

This chakra rules the **Endocrine gland the Pineal Gland.**

Pineal means:

- 'of the pine,
- the pine cone'

The Latin root word is **Pituīta** which means:

- *catarrh,*
- *a cold in the head,*
- *phlegm – could this be the origin of the common cold?*



The largest image of a pine cone stands in the square or Court of the Pine in the Vatican, Rome.

The pine cone topped the **Thrysus** or **staff of Hermes** which is the rod of the **Caduceus**, and links to the **two keys on the back of the Pope's robes the keys of the male - Janus, (Pingala) and female - Cybele (Ida), the pine cone symbolic** of the crown chakra and the Kundalini energy.

These are all symbols of mind control.

The **Pineal gland**, about the size of a pea sits in a tiny **cave** behind the **Pituitary gland.**

It regulates the secretion of the hormone **Melatonin.**

Melatonin regulates our **circadian rhythms**, which are the *rhythms of waking and sleeping, or consciousness in our outside world and consciousness in our inside world.*

The **Pineal** is the **primary link between our soul and our brain.** It forms a **gateway to multi-dimensional awareness.**

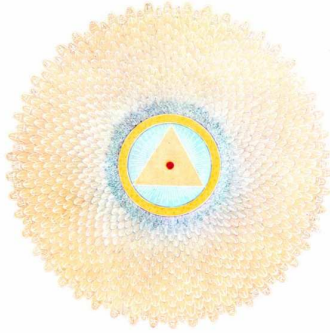
It is the **regulator of light** and scientific research suggests that the Pineal gland may function in converting neural information about light conditions into hormonal output.



In other words, where there is less light, the Pineal produces more Melatonin.

Where there is more light, it produces less Melatonin.

This keeps us awake and functioning in the day and facilitates sleep at night. As light enters *the Retina* of the eyes this signal is sent via the **Optic Nerve** to the region of the **Hypothalamus** called the **Suprachiasmatic nucleus**. This pathway is called the **Retino-hypothalamic Tract**.



From the Suprachiasmatic nucleus, nerve impulses, via the sympathetic nervous system, travel to the Pineal and inhibits Melatonin.

The **Pineal** rules **Biorhythms**, whether we **feel high or low**. To open the crown chakra is to

'release suffering, the multi-dimensional healing process of our 'life issues.'

It is through healing ourselves that we can heal others.

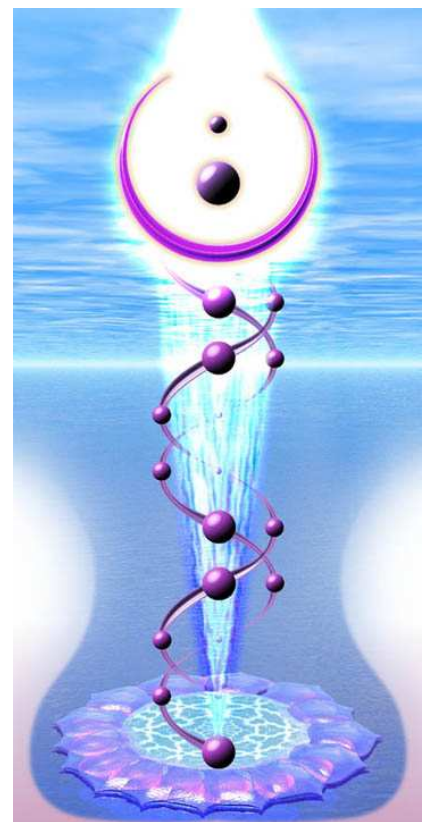
Once we have faced our dark sides, our fear greatly diminishes, after all it is the *'enemy within'* that causes the greatest threat – could this be the *Kundalini?* - The fallen angel in disguise as a great goddess?

In the **Sahasrara** dwells the godhead or **Supreme SHIVA-PARAMAMSHIVA** where the Yogi returns to a state of oneness with the 'absolute' Shiva like the goddess has terrible and graceful forms.

He can be benign or vengeful.

In the **union or balancing of the Ida and Pingala**, it is like the **wedding of the Sun and Moon**.

This wedding is called the **SANDHYA**. This wedding is of **Jiva**, the individual soul and **Brahman**, the absolute reality **Turiya**



The crown chakra connects to the **CHAKRA OF THE MOTHER EARTH** in **Mount Fujiyama, in Japan**.

Yama means 'mountain' which has provided a spiritual basis for Japan since ancient times. It is also the name of the demon of death.

It is also a name of satan in the form a **Tibetan** and **Hindu** god of destruction or to **Mount Kailas, Tibet**. (Kailas is so close to both the names kali and cailleach)

This chakra represents the full multi- dimensional consciousness.

To the followers of New Age, this represents:

- the journey to the 'self'
- the self realization to the god of 'self,
- the divinity **Atma Shakti Kundalini**
- **the 'bestower of Siddhis' –occult power.**

This is a quote from a **New Age** article:

*“Kundalini bestows liberation on Yogis and bondage on the ignorant, it is simply Goddess energy. It can be dangerous in that it can **cause terrible headaches**, increased body temperature, **extreme anxiety**, along with numerous other symptoms within the body and the mind.*

*Prolonged symptoms can lead to **neurosis and chronic physical pains, mental collapse, psychosis, demon possession or oppression**. We automatically want to fight what is happening within us, especially when we don't fully understand the process. If we recognize the body as energy, once the feelings are recognized we can deal with them accordingly.”*



FREEMASONRY⁵

There is evidence that **Freemasonry** and many other **occult organisations** have **all the inner workings of a spirit of kundalini**.

The “**tree of life**” of Freemasonry is wicked. It defiles the precious from the Tree of all fruitfulness. That fruit produces **death**.

Freemasonry is an alliance with all false religions, including **Hinduism, Islam and Buddhism**. Freemasonry states that all religions are acceptable.



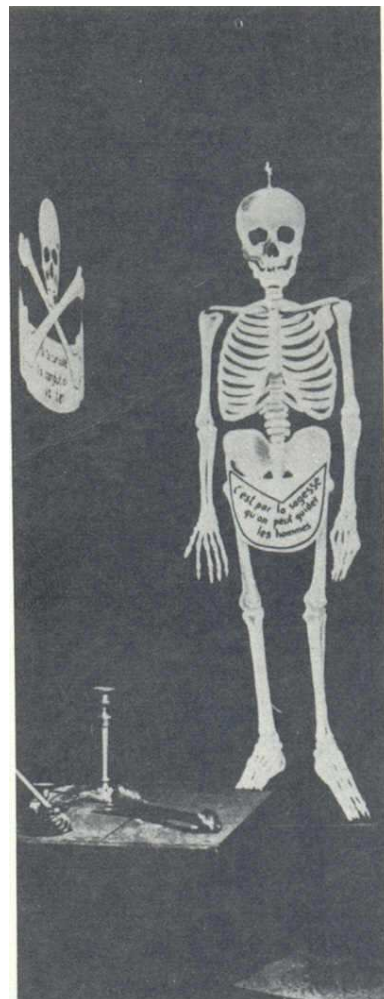
Isaiah 28:14-15 “*Therefore hear the word of the Lord, you scoffers who rule this people in Jerusalem. You boast, ‘We have entered into a covenant with death, with the grave we have made an agreement. When an overwhelming scourge sweeps by, it cannot touch us, for we have made a lie our refuge and falsehood our hiding place.’*”

This is not just empty boasting. **There are in fact covenants that provide protection for demons**. If you are trying to evict a demonic intruder who is resistant, it may be that **there is a covenant providing protection for that evil spirit**. If there is an **unholy alliance between jealousy and death, the victim spirit, or Freemasonry**, a lot of time could be spent commanding, rejecting and renouncing, without result because **their unholy alliances do indeed afford the demons some level of protection**.

A covenant that was voluntarily entered into by two parties is allowed to stand; regardless of the pain it causes one party or the other, unless there is a law that supersedes it.

Similarly, there are ancient generational covenants that were made voluntarily at some point, and they provide a measure of protection for the demons in an individual’s life.

However, those covenants are subject to the higher law of the universe.



⁵ Taken out of “**The Hidden Life in Freemasonry**” by **C. S. Leadbeater**

Any individual can appeal to the Righteous Judge of the Universe on the basis of those covenants not being just or righteous according to the supreme law that God has established.

Then, if God agrees that those covenants stand in violation of His law, He declares them annulled. That removes the protection the demons once had.

Once the unholy alliances and the covenants of protection have been annulled by God, we proclaim that the individual has voluntarily entered into a blood covenant relationship with Jesus.

We proclaim that this covenant transcends and supersedes every other covenant, agreement, or protection.

Isaiah 28:16-18 *“So this is what the Sovereign Lord says: ‘See, I lay in Zion, a tested stone, a precious cornerstone for a sure foundation; the one who trusts will never be dismayed. I will make justice the measuring line and righteousness the plumb line; hail will sweep away your refuge, the lie, and water will overflow your hiding place. Your covenant with death will be annulled; your agreement with the grave will not stand. When the overwhelming scourge sweeps by, you will be beaten down by it.’”*

We must be determined to **separate the vile from the precious**: the Kingdom of Light from the kingdom of darkness. This is the true mandate for the Priesthood of Yeshua.

Jeremiah 15:19-21 *“19 Therefore thus says the Lord [to Jeremiah]: If you return [and give up this mistaken tone of distrust and despair], then I will give you again a settled place of quiet and safety, and you will be My minister; and **if you separate the precious from the vile** [cleansing your own heart from unworthy and unwarranted suspicions concerning God’s faithfulness], you shall be My mouthpiece. [But do not yield to them.] Let them return to you— not you to [the people].
20 And I will make you to this people a fortified, bronze wall; they will fight against you, but they will not prevail over you, for I am with you to save and deliver you, says the Lord.
21 And **I will deliver you out of the hands of the wicked**, and I will redeem you out of the palms of the terrible and ruthless tyrants.”*

The kundalini is vile – it produces death and it will kill the body.



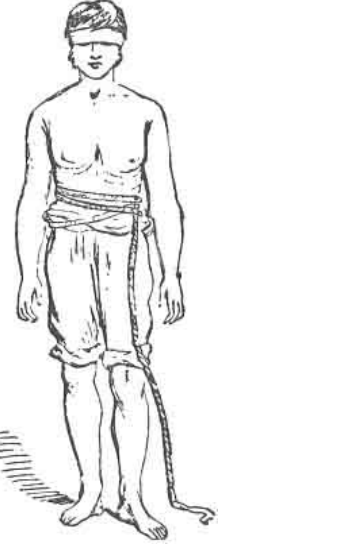
(The masonic cable tow is symbolic of the serpent kundalini.)

“In the **First degree**, it affects the **IDA**, or **feminine** aspects of the force, thus making it easier for the person to control passion and emotions. (In Freemasonry it coils as the cable tow around the neck.)

In the **Second degree**, it is the **PINGALA** , or **masculine** aspect which is strengthened in order to facilitate control of the mind. (In this degree the cable tow kundalini coils over the right arm and upper torso.)

In the **Third degree** it is the **central energy** itself the **SUSHUMNA**, which is aroused, thereby opening the way for the influence of the **pure spirit** on high (Lucifer). (In this degree the cable tow kundalini coils three times around the waist.)

The Masonic Cable Tow (symbolizing the serpent / kundalini):

<p>1st Degree – In Freemasonry it coils as the cable tow around the neck:</p>	<p>2nd Degree – In this degree the cable tow kundalini coils over the right arm and upper torso:</p>	<p>3rd Degree – In this degree the cable tow kundalini coils three times around the waist:</p>
		

It is passing through this channel of the **Sushumna** that a Freemason leaves his physical body at will (astral travel) in such a manner that he can retain full consciousness on higher planes and brings back into his physical brain a clear memory of the experience.” This is often the root of false visions and experiences.

The method devised by Lucifer in the Garden is mirrored in the methods being used in the **first three degrees** of Masonic initiations. The thirty-three degrees of Freemasonry connects to the thirty-three bones of the spine.

The initiation into Freemasonry is done by:

- first activating the woman-feminine **Ida** channel,
- then the man – masculine **Pingala** channel,



- then the contact with the **pure spirit** – Lucifer – through the **Sushumna** which is the **human spine** (the tree.)



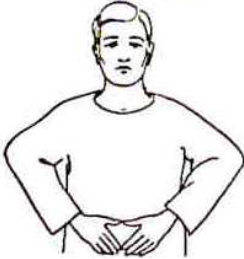

It is exactly the same pattern used by Lucifer – first Eve, then Adam, then both their eyes were opened – enlightenment.

The **Ida** and **Pingala** are called **nadi**, nerve channels in the human spine. **If the knot of a Masonic apron is tied, it activates the Kundalini power which is passed on from generation to generation.**

The blows to the head in Freemasonry takes over the head and mind.

Freemasons, the ' *hierarchs of fire* 'refer to it as the ' *dormant fire* ' the ' *lucifer spirit* ' which is kindled into light by friction, by the blow of a hammer, or by chemical reaction.

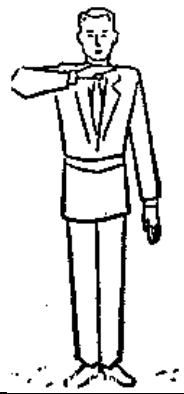
In Freemasonry there are Seven Chakras:

1. The root Chakra (the apron)	<p>Vorderseite / frontside</p>  <p>Rückseite / backside</p> 
2. The lower Chakra	
3. The solar plexus Chakra	

4. The heart Chakra



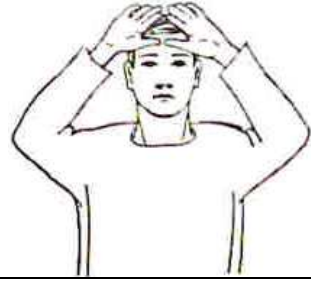
5. The throat Chakra



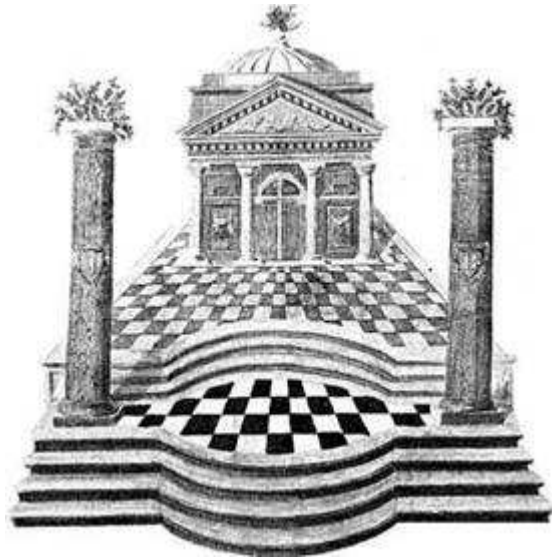
6. The brow Chakra



7. The crown Chakra



There are seven steps into the Masonic lodge.



UNDERSTANDING THE LEWIS STONE AND THE LEWIS CURSE

1. The **firstborn** son of a Freemason is known as a **Lewis**.
2. Another meaning of the Lewis is the apparatus that gets pushed under a heavy stone block to be able to lift it or move it.
3. The stone in the **middle of a built arch** is also known as the **corner stone and the Lewis Stone**.

How is this arch built?

When a stone mason builds an arch, he uses **supports** to keep the stones in place while it is still uncompleted. The chiseled stones get cemented together from both sides working towards the center. As soon as the corner stone is placed in its place, the supports can be removed and the arch stands on its own!

Why the corner stone, as well as the oldest son of a Freemason is called a Lewis.

For many centuries in **Persia**, they built an archway where the False Messiah (Baal Berith) was placed in the middle of the arch. He was portrayed as a son on a rainbow. The Lewis Stone is placed at exactly the same place.



During the Christian era this False Messiah was wrongly associated with the true Jesus Christ.

In their search for **enlightenment**, the Freemasons climb up **Jacob's ladder** according to the **degrees** of Freemasonry, until at last they are "enlightened" when they get to the 31 – 33 degrees. It is at this stage that the **Kundalini serpent** has climbed through the **7 chakras** on the spine – 31-33 vertebrae.

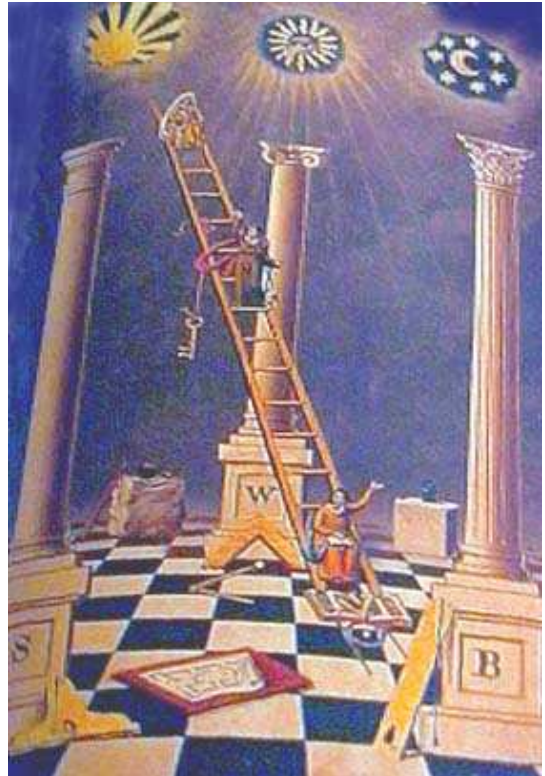
According to the Freemasons, at this stage, they are changed into so-called "gods".

This in turn, causes the eldest son of the Freemason to be a "son of god". He sits in the middle of the rainbow (which is the symbol of the covenant that God made with Noah) as the "Messiah".

If this so-called "messiah" does not take up his calling to be a Freemason, he comes automatically under the Lewis Curse:

He will never be successful in his life – he will always be struggling with financial problems and will forever be a failure.

PRAISE GOD THAT YESHUA IS OUR MESSIAH!!



THE STRUCTURE OF FREEMASONRY

